

dB

THE SOUND ENGINEERING MAGAZINE

AUGUST 1975 \$1.00



IN THIS ISSUE:

- A View of Electronic Music
- Operations of Moog Synthesizer Modules and Components
- In the CD-4 Groove

EVERYTHING AUDIO



Studios by design...

not by accident

Circle 10 on Reader Service Card

Accept our invitation to contact us and discuss your studio needs. 14045 Sherman Way, Van Nuys, California 91405 / (213) 873-44

coming
next
month

● Ingenuity in the use of microphones is the theme of two workshop articles coming in September.

● Michael Rettinger tells us how to *Calibrate Microphones by Reciprocity*. The secret is in using rapid alternation of loudspeaker transducers.

● *A Simple and Superior Microphone Preamplifier* is described by R. S. Mintz. The device uses an integrated circuit and a minimal number of external passive components.

● The first of a three-part series on *Feedback* by Norman H. Crowhurst deals with its effect on gain, distortion, and impedance as well as negative and positive feedback, and phase.

db

THE SOUND ENGINEERING MAGAZINE

AUGUST 1975, VOLUME 9, NUMBER 8

| | |
|----|--|
| 12 | IN THE CD-4 GROOVE Edward Horn |
| 15 | THE NEW YORK EXPERIENCE Martin Dickstein |
| 25 | OPERATIONS OF MODE SYNTHESIZER MODULES AND COMPONENTS Robert C. Ehle |
| 30 | A REALISTIC VIEW OF ELECTRONIC MUSIC David Cope |
| 2 | LETTERS |
| 4 | INDEX OF ADVERTISERS |
| 6 | CALENDAR |
| 7 | FREE LITERATURE |
| 8 | THEORY AND PRACTICE Norman H. Crowhurst |
| 11 | SOUND WITH IMAGES Martin Dickstein |
| 20 | NEW PRODUCTS AND SERVICES |
| 33 | CLASSIFIED |
| 36 | PEOPLE. PLACES. HAPPENINGS |

db is listed in **Current Contents: Engineering and Technology**

Robert Bach
PUBLISHER

Larry Zide
EDITOR

Bob Laurie
ART DIRECTOR

John Woram
ASSOCIATE EDITOR

Eloise Beach
CIRCULATION MANAGER

Hazel Krantz
COPY EDITOR

Crescent Art Service
GRAPHICS

Ann Russell
PRODUCTION

about
the
cover

● That's Roger Powell at the Moog Synthesizer. Photo copyright 1974 by Alan F. Blumenthal and used with permission.

db, the Sound Engineering Magazine is published monthly by Sagamore Publishing Company, Inc. Entire contents copyright © 1975 by Sagamore Publishing Co., Inc., 1120 Old Country Road, Plainview, L.I., N.Y. 11803. Telephone (516) 433-6530. db is published for those individuals and firms in professional audio-recording, broadcast, audio-visual, sound reinforcement, consultants, video recording, film sound, etc. Application should be made on the subscription form in the rear of each issue. Subscriptions are \$7.00 per year (\$12.00 per year outside U. S. Possessions, Canada, and Mexico) in U. S. funds. Single copies are \$1.00 each. Controlled Circulation postage paid at Harrisburg, Pa. 17105. Editorial, Publishing, and Sales Offices: 1120 Old Country Road, Plainview, New York 11803. Postmaster: Form 3579 should be sent to above address.

The CROWN VFX-2

electronic crossover

Commercial sound contractors across America have been asking for an electronic crossover for use on sophisticated sound installations. There's no more waiting. And the Crown VFX-2 embodies all you expect in high quality and performance capabilities from the people at Crown.

Only the Crown VFX-2 electronic crossover will give every installation **maximum** versatility. Such **flexibility** for so little cost. And never before has an electronic crossover been offered that can be easily and readily adjusted with front panel controls.

Tunable from 20- to 20,000 Hz, this solid state component is compatible with 600 ohms loads and up, and features both balanced and unbalanced inputs and outputs.

Overall noise and distortion are extremely low. IM distortion is less than 0.01% at rated output, and noise is more than 97dB below rated output with open inputs.

Providing either crossover or bandpass functions, the VFX-2 utilizes two continuously variable filters per channel, and filter roll-off is at a fixed 18 dB/octave.

Applications include stereo bi-amping, mono tri-amping, and combining the bandpass filter with the normal two-way crossover on a mono signal. And all connections are quarter-inch phone jacks for positive electrical contact.

The VFX-2 is designed for standard 19" rack mounting and measures in at 3½" high by 5¾" deep and includes a clear plastic cover for protecting control settings.



Write for complete specifications.



CROWN

BOX 1000 • ELKHART, IN. 46514 • 219/294-5571

db letters

THE EDITOR:

Towards the end of May, we wrote to you asking for possible manufacturers of RC-10 caplugs. As per your suggestion, we have written to both Atlas and Beyer, only to receive "No" answers. Perhaps one of your readers might have this information?

BILL BEATTY
DAVE BEATTY STUDIOS
1414 S. 5th
Springfield, Ill. 62703

THE EDITOR:

In the June issue, a letter from George W. Hamilton on page 2 caught my eye. I have Mr. Hamilton beat by a long time!

I was the first chief engineer of the Syracuse Radio Workshop, the predecessor of WAER during the years 1937-1938. The installation was built in the basement of the library building and consisted of two studios and a control room. The equipment was Western Electric, vintage of the early 30's, donated by WFBL when that station replaced it with more modern gear. The amplifiers used the old round bulb tubes, whose type numbers I cannot recall. The microphones were the Western Electric condenser microphones with the small vacuum tube amplifiers built into them. They were built into cylindrical cans which weighed a ton (so it seemed).

There was no f.m. in those days. Programs were produced for both WFBL and WSYR. When we went on WSYR, the call sign, WSYU, was used (same transmitter, different call sign). Their transmitter was located on the university campus in those days, and was 250 watts to a single vertical radiator. The transmitter had formerly been one which was built by Clive B. Meredith of Cazenovia, N.Y., who started WSYR as WMAC in his home.

Professor Kenneth Bartlett, later to become Dean and then Vice-Chancellor, was the director of the Radio Workshop. Operating that setup, antiquated as it was, was good fun, and we took it very seriously. The Workshop produced some very famous people in broadcasting, too numerous to mention here.

Just a bit of nostalgia from those old days.

PAUL H. LEE, President
P. H. LEE ASSOCIATES, INC.
Thousand Oaks, Ca.

THE EDITOR:

With reference to your listing of suppliers of audio gear in the San Francisco area in your June issue, please accept an indignant "You left me out" complaint. The Langevin Company, Inc. is the oldest firm in this area, supplying and installing professional audio systems and equipment since 1927. We represent many of the top quality professional audio equipment manufacturers as well as custom-building systems for specific requirements.

Thanks for the opportunity to correct this oversight.

H. A. WOLLENBERG, President
THE LANGEVIN COMPANY, INC.
1050 Howard St.
San Francisco, Ca. 94103

THE EDITOR:

Just read Bob White's article, "A Simple High-Quality High-Speed Tape Duplicator," in the May issue and I want to inform you that I have a model 970 Ampex if anyone is interested in buying it.

D. M. Wesenberg
1904 Harlan Rd.
Toledo, Ohio 43615

you write it

Many readers do not realize that they can also be writers for **db**. We are always seeking meaningful articles of any length. The subject matter can cover almost anything of interest and value to audio professionals.

You don't have to be an experienced writer to be published. But you do need the ability to express your idea fully, with adequate detail and information. Our editors will polish the story for you. We suggest you first submit an outline so that we can work with you in the development of the article.

You also don't have to be an artist, we'll re-do all drawings. This means we do need sufficient detail in your rough drawing or schematic so that our artists will understand what you want.

It can be prestigious to be published and it can be profitable too. All articles accepted for publication are purchased. You won't retire on our scale, but it can make a nice extra sum for that special occasion.

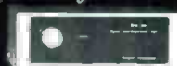
Our new E series audio equipment will improve your sound and cut your costs . . . or your money back!



**TURNTABLE
PREAMPS**



**MIC & LINE
AMPLIFIERS**



AUDIO DISTRIBUTION AMPLIFIERS



AUDIO CONSOLES & CONTROLLERS



**STUDIO MONITOR
AMPLIFIERS**



**REMOTE POWER
CONTROLLERS**



**AUTOMATIC TAPE CARTRIDGE
& CASSETTE LOADERS**

TEN DAY FREE EVALUATION AND 2 YEAR GUARANTEE INSURE YOUR UNCOMPROMISED SATISFACTION

TURNTABLE PREAMPS

Preamps costing almost 3 times more will not compare with these units. RIAA/NAB equalized ± 1 db, 0.5MV sensitivity at 1KHz for $+4$ dbm out, balanced outputs, -75 db s/n at 10mv in, 0.05% distortion, $+21$ dbm max. out. Internal power supply.

MP-8E Mono \$86 SP-8E Stereo \$137

MIC & LINE AMPLIFIERS

Dual function and superb performance. Inputs for mic and line, ± 0.5 db response 10Hz-20KHz, 67db gain on mic channel(s) $+26$ db gain on line inputs. Balanced inputs & outputs, $+21$ dbm out max, 0.1% distortion. Internal power supply.

MLA-1E Mono \$98
MLA-2E Dual Mono/Stereo \$139

AUDIO DISTRIBUTION AMPLIFIERS

From 1 in/6 out to 20 in/80 out in one small package. Whatever your distribution requirements we have an answer. All units meet or exceed the following specifications: Balanced bridging/matching inputs, balanced 600ohm outputs, ± 0.5 db response 10Hz-20KHz, ± 3 db 5Hz-40KHz, 26db gain, $+21$ dbm out. max. capability, 0.1% or less distortion, outputs isolated by 80db, hum and noise 90db down referenced to $+21$ dbm out. Internal power supplies.

DA-6/E Table top. 1 in/6 out. \$131
DA-6R/E Rack mount. 1 in/6 out. \$149
DA-6BR/E Rack mount. 1 in/6 out. Individual level controls for each output. \$165
DA-6RS/E Rack mount. 1 in/6 out stereo or 2 in/12 out mono. \$229
DA-16BR/E Rack mount. 1 in/8 out stereo or 2 in/16 out mono. Individual output level controls, selectable metering & headphone monitoring. \$287
DA-2080/E Rack mount main frame with protected

power supply, metering & headphone monitor. Will accept up to 10 slide in modules. Each module has 2 inputs & 8 outputs. Individual output level controls & selectable meter switch. Up to 20 in/80 out.

DA-2080/E Main Frame \$150
DA-2080/E Modules 2 in/8 out \$135 ea.

AUDIO CONSOLES & CONTROLLERS

Our new series 35 audio controller introduces a new concept in audio mixing. Allows separation of controls from the audio functions. Controls can be placed in any convenient location in the studio, while electronics may be mounted anywhere for easy maintenance & hookup. Remote DC control for completely unaffected audio.

This versatility gives you a custom designed console at a standard production model cost.

Features include; 8 channels, mono, dual channel mono, stereo, dual channel stereo, or combinations; paralleling 2 units for quad, fail safe power supply & plug in interchangeable cards.

Performance specifications are; 0.3% or less distortion, 124dbm equivalent noise on low level channels, approximately 25w power consumption, -70 db crosstalk, balanced bridging/matching inputs & response within ± 2 db 20Hz-20KHz. Series 35 audio controllers start at \$1200.

AUTOMATIC TAPE CARTRIDGE AND CASSETTE LOADERS

So easy to use & accurate that our largest winder competitor has been using one of these to load their own carts.

Eliminates guesswork. Set the dials to the length desired. The exact amount of tape is fed onto the cart or cassette hub and then shuts off automatically. Also has exclusive torque control for proper tape pack on different size hubs. Winds at 30 IPS.

ACL-25/E \$185

Winders also come in higher speed models (ACL-60 series). Same operation as above but winds at 60 IPS. Accepts 14" pancakes.

ACL-60T/E (tone stop only) \$266
ACL-60B/E (Blank tape loader) \$331
ACL-60BT/E (for both prerecorded and blank tape) \$375

STUDIO MONITOR AMPLIFIERS

Exceptional reproduction! Internal muting. ± 2 db response from 20Hz-40KHz. 25w music power, 20w RMS into 8 ohms. Hum & noise 65db below rated outputs.

Distortion less than 0.25% at less than 20w out, 1% or less at 20w. Works into 4-16ohms. Balanced bridging inputs, variable bass contour, internal overload & short circuit protection.

SMA-50/E Table top (mono) \$125
SMA-500/E Rack mount (mono) \$142
SMA-1000/E Rack mount (stereo-40w) \$196

REMOTE POWER CONTROLLERS (DUAL)

Safe, transient free means of controlling 110V/AC. Turntables, on the air lights, etc.

PR-2 (toggle switch on/off) \$39
PR-2B (momentary contact actuation) \$54

Give us a call or write today for further details. You'll be money and performance ahead.

CALL COLLECT — (916) 392-2100

WRITE — 3516-C LaGrande Boulevard
Sacramento, California 95823

RAMKO RESEARCH

Our selling premise is

Simple...

STL magnetic Test Tapes are the Most Comprehensive

We offer precision magnetic test tapes made on precision equipment for specific jobs in 1" and 2" sizes as well as flutter tapes and all other formats.

When you use STL test tapes you combine interchangeability with compatibility. You know you are using what other leaders in the professional recording, equipment manufacturing, government and educational agencies throughout the world are using.

Make sure your system is in step with the rest of the industry.

Write for a free brochure and the dealer in your area.
Distributed exclusively by Taber Manufacturing & Engineering Co.



STANDARD TAPE LABORATORY, Inc.

2081 Edison Avenue
San Leandro, CA 94577
(415) 635-3805

Circle 14 on Reader Service Card

ACTIVE EQUALIZERS SERIES 4000

FEATURES

- * 27 Channels on ISO 1/3 octave centers from 40 Hz to 16 kHz
- * 10 dB boost or cut on continuous control
- * Equal Q in both boost and cut
- * Magnetically shielded for low hum pickup
- * Variable low frequency cut
- * No insertion loss
- * All negative feedback for highly linear and stable operation
- * Low noise
- * Dual outputs with plug-in networks for bi-amp option.



Size: 3½" x 17"
8½" deep

Sound Reinforcement Model — Security Cover
Rack Mounting — Transformer Coupled Input

MODEL 4002
Music Reproduction Model — Rubber Feet For
Table Use — Phono Type Connectors — Input Level
Control

Black Anodized
Aluminum Finish

Dealer Inquiries
Are Invited

White

Call or Write — White Instruments, Inc.
P.O. Box 698, Austin, Texas 78767, Phone 512/892-0752

Circle 15 on Reader Service Card

index of advertisers

| | |
|---------------------------------|---------|
| Amber Electro Design | 17 |
| Audionics | 14 |
| Bose Corporation | 29 |
| Crown | 2, 22 |
| Electro-Voice | 21 |
| Everything Audio | Cover 2 |
| FX, Inc. | 10 |
| Garner Industries | 6, 17 |
| J. B. Lansing Inc. | Cover 3 |
| London Company | 27 |
| Lumiere | 16 |
| Magna-Tech Electronic | 9 |
| Rupert Neve | 31 |
| Peavey Electronics | Cover 4 |
| Polyline | 7 |
| Precision Electronics | 22 |
| Pulse Dynamics | 28 |
| Ramko Research | 3 |
| R.I.A. Tapes | 13 |
| SAE, Inc. | 23 |
| Sescom, Inc. | 7 |
| Shure Brothers | 24 |
| Standard Tape Labs | 4 |
| Stanton Magnetics | 7 |
| Taber Mfg. & Eng. | 6 |
| TEAC Corp. of America | 18, 19 |
| White Instruments | 4 |
| Woram Audio | 35 |
| Yamaha Musical | 5 |



sales offices

THE SOUND ENGINEERING MAGAZINE

New York
1120 Old Country Rd.
Plainview, N.Y. 11803 516-433-6530

Roy McDonald Associates, Inc.
Dallas
Stemmons Tower West, Suite 714
Dallas, Texas 75207 214-637-2444

Denver
3540 South Poplar St.
Denver, Colo. 80237 303-758-3325

Houston
3130 Southwest Freeway
Houston, Tex. 77006 713-529-6711

Los Angeles
500 S. Virgil, Suite 360
Los Angeles, Cal. 90020 213-381-6106

Portland
2035 S. W. 58th Ave.
Portland, Ore. 97221 503-292-8521

San Francisco
Suite 265, 5801 Christie Ave.
Emeryville, Cal. 94608 415-653-2122

BE RIGHT EVERY NIGHT.



On the road, each performance is opening night.

In the studio or disco, each session makes or breaks a reputation.

When a mixer goes wrong, you're the one who gets the blame.

Never fear. Presenting the Yamaha PM-400B. The one with professional specs and versatility.

It takes 8 channels of input and turns them into stereo output. It's designed to easily stack, for linking together in 16x2 and 24x2 configurations.

At about a hundred bucks a channel, you are in complete control of the sound.

And since a mixer has to take more than a little knocking around, we've made the PM-400B rugged enough to take it.

Sure, you'll be right every time.

What's more, you'll feel right each morning after the night before.



Yamaha International Corporation, Box 6600, Buena Park, Calif. 90620.

After you use the 1056, we'll know one thing about your dub quality: it just got better.

Professional studios that make lots of dubs for radio, welcome the speed and quality they get using the Garner 1056. It offers a whole new set of advantages for producers of reel-to-reel duplicates for radio, AV, or educational needs. Some of those are: • Single capstan drives the master and all five copies. • Solid-state electronics and special heads provide outstanding frequency response. • Two-speed drive allows either 30 or 60 i.p.s. duplicating. • Extra-fast rewind of master tape speeds production. • Unique forward tilt of transport mechanism aids threading. • Conveniently located controls feature push button operation.



GARNER INDUSTRIES

4200 NORTH 48TH STREET
LINCOLN NEBRASKA 68504

Circle 17 on Reader Service Card

For Tape Heads Head for TABER

At Taber you get precision work, quality results and low price . . . unmatched by any other audio head manufacturer.

TABER professional audio heads are available in full track through 16 track configurations including 1/4" 4 channel for your Ampex 440 series and Scully 280 series recorders.

TABER provides expert and prompt reconditioning service for all audio head configurations.

Loaner assemblies are available.

For heads, head for Taber . . . the best source available.

Send for free brochure.



TABER

Manufacturing & Engineering Company
2081 Edison Ave. • San Leandro, Ca. 94577 • (415) 635-3831

Circle 18 on Reader Service Card

CALENDAR

SEPTEMBER

- 15-17 **NOISE-CON '75** National Conference on Noise Control Engineering. Gaithersburg, Md. Pre-seminar at the Shoreham Hotel, Washington, D.C. Sept. 11-13. Contact (914) 462-6719.
- 21-24 **International MUSEXPO '75**, Las Vegas, Nev. Contact: Roddy Shashoua, International MUSEXPO, 1350 Ave. of the Americas, New York, N.Y. 10019. (212) 489-9425.
- 28- Oct. 3 **SMPTE Technical Conference and Equipment Exhibit**. Century Plaza Hotel, Los Angeles. Contact: SMPTE Conference, 862 Scarsdale Ave., Scarsdale, N.Y. 10583.
- 29-30 **N.Y. Chapter of ERA, Commercial Sound & Communications Show**, Statler-Hilton Hotel, New York City. Contact: GIM Sales Corp., 375 N. Broadway, Jericho, N.Y. 11753 (516) 433-4080.
- First Congress of the FASE on Acoustics. Groupement des Acousticiens Francaise (GALF). Paris, France, Secretariat: C.N.E.T., Issy-les-Moulin-eaux 92, Paris.

OCTOBER

- Fall Conferences, National Association of Broadcasters. Contact: NAB, 1771 N St., N.W., Washington, D.C. 20036. (202) 293-3500.
- 12-14 Atlanta
- 15-17 Boston
- 21-26 **International Audio Festival Fair**. London, England. Contact: British Information Service, 845 Third Ave., New York, N.Y. 10022. (212) 752-8400.

NOVEMBER

- 3 -31 **Audio Engineering Society 52nd Convention**, Waldorf-Astoria Hotel, New York, N.Y. Contact: AES, Room 929, 60 E. 52nd St., New York, N.Y. 10017. (212) 661-8528.
- 4-7 **Meeting of the Acoustical Society of America**, San Francisco, Ca.
- NAB Fall Conferences**. Contact: NAB, 1771 N St., N.W., Washington, D.C. 20036. (202) 293-3500.
- 9-11 New Orleans
- 12-14 Chicago
- 16-18 Denver
- 19-21 San Francisco

FREE LITERATURE

To obtain the free literature described, please circle the appropriate number on the Reader Service Card in the back of the magazine.

MEASUREMENTS

PORTABILITY . . . And Your Best-Buy Instrumentation for Sound & Vibration Measurements is the title of this brochure. Material includes graphic comparisons of analyzers, meters, specialized measurement equipment, and recorders. Mfr: B&K Instruments, Inc.

Circle No. 80 on R. S. Card.

VIDEO CASSETTE PROCEDURES

Proper handling and storage procedures for video cassettes is the topic of the Spring issue of *Scan*, a four-page newsletter published for video tape users. Mfr: Memorex.

Circle No. 81 on R. S. Card.

METERS AND RECORDERS

This 60-page instrumentation catalog describes over 2,000 stock ranges, sizes and types of analog, digital and AnaLed panel meters, chart recorders, meter relays, pyrometers, controllers, digital and analog test equipment, and portable instruments. Mfr: Simpson Electric Co.

Circle No. 82 on R. S. Card.

INFORMATION CASSETTE LIBRARY

Catalog contains over 200 cassettes on Management, Data Processing—Technical, Computer Design/Computer Aided Manufacture, Instrumentation, Production and Inventory Control, Metals, and Software Industry Development. Mfr: Information Cassettes, Inc.

Circle No. 83 on R. S. Card.

FREE RADIO TAPES

Creative, non-controversial approaches to contemporary issues offered in 15-minute segments without cost to commercial and college radio stations. English or Spanish. Mfr: Integrity Magazine.

Circle No. 84 on R. S. Card.

DIGITALS

Timers for broadcast and industrial needs are detailed in a 7-page brochure. Mfr: ESE

Circle No. 85 on R. S. Card.

SPECIALTY ALLOYS

Vacuum-melted alloys for electrical and electronic applications are described in bulletin EA-03. Mfr: Magnetics Specialty Metals Division.

Circle No. 86 on R. S. Card.

INTERCONNECTION MOLDINGS

Specialty moldings, test fixtures, test sockets and die stamping and die forming are described in this brochure. Mfr: Plastronics.

Circle No. 87 on R. S. Card.

D.C. POWER SUPPLIES

Covered in this catalog are bench-type units for circuit testing and development, modular supplies to power systems, high-power supplies used in industrial processes and special purpose units. Mfr: Hewlett-Packard Co.

Circle No. 88 on R. S. Card.

POWER DARLINGTONS

Graphs and diagrams illustrate this data sheet on 125 watt high voltage monolithic Darlington. Mfr: International Rectifier.

Circle No. 89 on R. S. Card.

MICROPHONE USE FOR MUSICIANS

"The Music-Maker's Manual of Microphone Mastery" describes in non-technical terms how to mic professionally voices and instruments, with listings of proven techniques for handling especially troublesome sound pick-up situations. Specific microphones for various instruments and situations are specified. Mfr: Shure Brothers, Inc.

Circle No. 95 on R. S. Card.

AM STEREO SYSTEM

Evaluation criteria for a.m. stereo broadcast systems are discussed in this booklet. It describes the system which RCA demonstrated at the 1975 National Association of Broadcasters convention. Mfr: RCA.

Circle No. 97 on R. S. Card.

IT'S A SMALL WORLD!

SMALLER AUDIO TRANSFORMERS
Sizes: 1-3/8" x 1-15/16", 15/16" x 1-1/4",
9/16" x 5/8" (Send for complete catalog)



Quality Engineered Sound Products
SESCOM, INC.
P. O. Box 590, Gardena, CA 90247 U.S.A.
(213) 770-3510 • TWX 910-346-7023

Circle 30 on Reader Service Card

36 types of empty tape reels and boxes

for hi-speed duplicating audio spots - tv spots

IMMEDIATE SHIPMENT FROM MANUFACTURER'S STOCK
GET CATALOG PD 175

Polyline CORP. 312/298-5300
1241 Rand Rd. DesPlaines, IL 60016

Circle 31 on Reader Service Card



Top Disc Cutting Studios, like The Mastering Lab, rely on Stanton's 681-Calibration Standard in their Operations.

Not everyone who *plays* records needs the Stanton Calibration Standard cartridge, but everyone who *makes* records does!

At The Mastering Lab, one of the world's leading independent disc mastering facilities, the Stanton 681 Triple-E is the measuring standard which determines whether a "cut" survives or perishes into oblivion.

A recording lathe operator needs the most accurate playback possible, and his constant comparing of lacquer discs to their original source enables him to objectively select the most faithful cartridge. No amount of laboratory testing can reveal true musical accuracy. This accuracy is why the Stanton 681 Series is the choice of leading studios.

When Mike Reese, principal disc cutter at The Mastering Lab, plays back test cuts, he is checking the calibration of the cutting channel, the cutter head, cutting stylus, and the lacquer disc. The most stringent test of all, the evaluation of direct to disc recordings, requires an absolutely reliable playback cartridge . . . the 681 Triple-E.

All Stanton Calibration Standard cartridges are guaranteed to meet specification within exacting limits. Their warranty, an individual calibration test result, comes packed with each unit. For the technological needs of the recording and broadcast industries, and for the fullest enjoyment of home entertainment, you can rely on the professional quality of Stanton products.

For further information write
Stanton Magnetics, Inc., Terminal Drive,
Plainview, N.Y. 11803



All Stanton cartridges are designed for use with all two and four-channel matrix derived compatible systems.

Circle 20 on Reader Service Card

● The more we get into educational use of media, which involves some really wonderful opportunities to use one's creativity, the more we also run across the same obstacles. And as readers of this column will undoubtedly get into the same spots sooner or later, it should be helpful for me to pass on some of my own experiences.

COMPATIBILITY

Audio people have met this gent before when we made the step from mono to stereo, first in disc, later in multiplex f.m. and more recently as we became involved with various things called *quadriphonic*. So the problems of achieving compatibility are not new to us. But they sure are to educators and teachers.

Sometimes this poses tougher problems than at others. For example, for my mediated English course, and my physics course, there was not much problem: just give the course the traditional name, and handle it differently. Maybe that only postpones the compatibility problem until the teachers have it in the classroom, but it does at least get things started.

With mathematics we had a much tougher problem. There are already what should be more than enough courses on mathematics: old, many kinds of new, and all kinds of in-between. Yet none of them seems to have made mathematics either enjoyable, or convinced people who have already been turned off by the very word that it's not beyond them at all when you approach it in a sensible way.

The only place you will find mathematics being approached sensibly so people are turned on by it and start learning easily, is in the classroom of an individual teacher who has that capability. We have already proved that it is impractical to start trying to change all existing teachers. We have also proved that a well-written textbook can work, provided some obnoxious teacher doesn't get in the way, and that individualized mediated instruction, which helps keep the teacher out of the way, can also make it happen.

But then the compatibility thing comes in, a little differently than with other subjects. If you call it "mathematics," the very word conjures up a barrier against you. Most of the students have seen such horrid things as fractions, algebra, geometry, etc.,

and you cannot sell *mathematics* to them anyhow. And really you cannot blame them. Learning math that compartmented way makes no sense whatever.

But learning *Problem Solving Arts* gets to be fun, for anyone. However, administrators, teachers and others now mess things up by throwing a whole bunch of compatibility problems at you. Oh, they won't call them *compatibility problems*—as we said, they don't know the word, yet! But the way they've been trained, after a student is exposed to a certain course, he must be given a test to prove that he's absorbed an adequate amount of instruction.

TESTING AND TESTING

There are different attitudes to tests. First, there is this compatibility question: if the student learns it the *Problem Solving Arts* way, will he be able to satisfy the traditional form of test, based on the algebra, geometry, algebra 2 sequence? If you are preparing a course, such as the *Problem Solving Arts* course I prepared, then this must be one of your requirements. You design the course, as we did, so that as well as coming to grips with the subject, and knowing it much better than he would by learning it the traditional way, the student can also satisfy any test based on the traditional method of learning it.

That may sound like a tall order. Actually, it is a piece of cake, provided you accept the fact that you must do it. The only thing that could conceivably throw the student in a conventional test is not knowing what some of the words mean. There is no doubt that he could solve the problem, but he may not understand what the question means. Of course, that situation is not new—plenty of students who learned by the traditional courses have run into that!

So you design the course so while primarily covering the subject, it also gives the student confidence in his own ability to solve problems. Then you fill in with the fancy words he may meet in conventional tests, and that won't take long when he knows the subject anyway. We have always found that you can help the student learn the basics of the subject, fill him in on all the possible variations he may encounter in various tests, and still have time to spare over that taken by teaching it the conventional way.

Before leaving conventional tests, we should comment a little more on what such tests mean against their more common background. Almost nothing, as we have said before. All they show is that the student can regurgitate what he has recently been shown. A parrot or a monkey, properly trained, could probably do better than most human students.

Added to this is the fact that students conventionally work, often quite hard, at being able to pass tests, rather than at learning the subject. When you realize that learning to pass tests is much harder than learning the subject so you can pass any test on that subject, you will wonder, as we did, how so many people could be so stupid!

TITLE COMPATIBILITY

What we have just been saying could apply equally well to a course in English, physics, or just about any subject you could name. The case we were discussing happened to be mathematics vs. *Problem Solving Arts*. However, regardless of whether the student ultimately learns the same thing or not, or whether he learns it better, titles are very important in education.

When you look at a school or community college catalog, you find there are two kinds of courses: credit and non-credit. Credit courses pay the instructor more, for one thing. But students are also more interested in credit courses, because those little numbers called credits count toward some paper qualification that seems vital to him, whether or not it means he knows something.

So, given this alternative we are talking about, the already accepted math courses, some of them at least, carry credit, but give the same acquisition of knowledge and skills the name "*Problem Solving Arts*," and bang goes the credit, for both instructor and student. So what can you do?

You have two options. One is to offer *Problem Solving Arts*, with the promise that, after successfully taking it (and pointing out that it's much easier to take) you will be able to successfully challenge specified math credits or whatever subject is involved. For some purposes this might be best, but we will not digress into the economics and finances involved, because these differ from place to place.

The other option is to offer the course as the math course whose credit will ultimately be achieved, merely changing the approach used in presenting it without altering its title. But here again, you cannot just do this if the institution for which you are doing it happens to specify that the text

The state of the art in film sound just took a giant step forward. In Speed. Flexibility. Safety. and Ease of Operation. For sound transfers, looping, re-recording, double-system screening and telecine interlock.

Magna-Tech's new 600 Series is the reason. This versatile new system features electronic interlock, foolproof IC logic and improved mechanical and electrical design. Incorporating traditional Magna-Tech reliability and durability, the MTE 600 Series provides expanded capabilities and superior performance in any application from the most compact studio to the largest mixing complex.

Among its many features are:

- stepping motor sprocket drive
 - optical/electronic high-speed interlock system
 - local or remote advance/retard of individual films in interlock
 - operates at 6-times-sync speed through sprocket in interlock with Magna-Tech high-speed intermittent projector, via optical encoder
 - operates 10-times-sync speed in interlock with video tape recorder
 - operates local at sync and 10-times-speed through the sprocket
 - 115/220 volt – 50 or 60 Hz operation
-
- flywheel accelerators for rapid start
 - film retracted from heads in all modes except sync speed forward
 - servo-controlled film take-up tension provides gentle handling of spliced tracks
 - automatic safety shutdown
-
- compatible with conventional interlock systems
 - multiple machine operation – as many as desired – in interlock via distribution amplifier
 - 6-buss interlock selector switch for studio delegation
 - can be cued on and off buss while running in interlock
-
- pushbutton-selected 16 or 35 speed and 24 or 25 frame rate, forward or reverse
 - local inching forward or reverse
 - plug-in head assemblies for play-only or erase/record/ play, interchangeable for 16, 35, 17½ and multi-tracks
 - multi-track pick-up recording with selective erase
 - 3000-foot (1000-meter) reel capacity



HIGH-SPEED ELECTRONIC INTERLOCK IS NOW A PRACTICAL REALITY

MAGNA-TECH ELECTRONIC CO., INC.

630 NINTH AVENUE/ NEW YORK, N.Y. 10036

- QUAD-EIGHT, 11929 VOSE ST., NORTH HOLLYWOOD, CA 91605
- CINESOUND INTERNATIONAL LTD., IMPERIAL STUDIOS, MAXWELL ROAD, BOREHAMWOOD, ENGLAND
- MAGNA TECHTRONICS (AUST) PTY. LTD. 49 WHITING ST., ARTARMON N S W., AUSTRALIA 2064

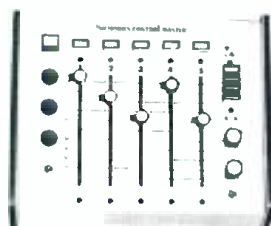
Circle 21 on Reader Service Card

The price of gold just went down.

Because with Memories Little Helper by Allison and Memories Control Master by fx, you can now achieve fully automated flexibility in your studio for less than 1/5th the cost of a fully automated mixing board. These units work together to give you the affordable automated mixing system encompassing all the special effects and features that mean golden chart results for your clients.

You're invited to experience the automated mixing capabilities of this Allison/fx system for yourself. Call 215-561-2178 (in New York City call 212-966-1255) for details.

Who knows? It could be the first of many Gold Record sessions for your studio.



212 North 12th Street, Philadelphia, PA 19107

theory & practice (cont.)

used shall be Admiral Cornwallis' *Mathematics From the Ocean Floor Up!* You will need to get a variance or at least come to an understanding, whereby you guarantee results, or something.

This title compatibility can be a tough nut to crack, but creativity should always prove at least equal to stupidity!

BETTER FORMS OF TESTING

Being able to meet existing test results should not be the objective. We want to produce better learning outcomes and to prove that we are doing so. Relevant to this is a question that my spring class in metric systems asked me, after some of them had confessed to suffering from "exam phobia." Why do people who really know the subject go all to pieces when they hear the word "exam," or "test"?

We discussed it, and concluded that it stems from a particular way in which tests or exams are applied, from the early days, when children are in the lower grades. The problem has a number of superficialities, but perhaps the most dominant one is that of working against the clock. When a test is on, you have 30 minutes (or whatever) to complete the answering of these questions. Another piece is the way questions are asked. Designers of tests seem to have a creed that the student shall not be allowed to guess what answering a particular question correctly tells the examiner about him.

Why not? Why the mysticism attached to testing? The student, as well as his examiner, should want to know, "Can I solve this kind of problem correctly, or can't I?" So why the

deep dark secret about it? And at first, that is all the student or examiner wants to know—not how quickly! When the student has established that he *can* do whatever it is, it is quite time enough for him to see *how quickly* he can do it. But that often is not the way things are.

Probably because this has been the way exams and tests have been regarded, that is the way that teachers use them. To get back to what we were talking about last month, I.Q. tests: we have these various tests—aptitude tests, and so forth—each of which is handed down, like a measure designed by God himself, and the teachers rely, with incredible faith, on the results.

By some magic, whatever the words or pictures to which the student responds, that I.Q. test will measure the students' I.Q. And because, according to some psychologists at least, a person's I.Q. does not change, what that test measures is unchangeable, too. We have seen countless examples where a student's scoring, say 75 in a particular I.Q. test, has had that student marked as a moron for life!

A typical teacher response will be like the professor I was talking about last month, "Can't expect any more of him, he has an I.Q. of 75!" Come to think of it, did I say he was joking? I'm not so sure he was. People who *believe* in I.Q. results place implicit trust in those figures as if they magically must be right. Can such a test tell *how much* intelligence a person possesses? Is intelligence a purely quantitative thing, or does it have a quality, differing for every individual? How can a test tell about that?

A difficulty is that people either believe, implicitly, in I.Q. tests and what they are supposed to tell, or they don't. The mystique of testing blurs everything. We need tests that tell something, that a person can tell about himself, as well as giving others information about him. When tests are designed with that frank objective they become meaningful and helpful. They also become part of the learning process, rather than a separate entity in themselves.

Space has gotten away from us this time. Another time we must give some dimensions that can be built into mediated material by which such meaningful tests can be made, and integrated into the learning process. One would think that such aspects would be the subject matter expert's domain. But it is apt to fall to the audio man by default: if we don't do something about getting these dimensions in there, education will continue to deteriorate, the way it has the last few decades, media or no media. ■

MOVING?

Keep **db** coming without interruption!

Send in your new address *promptly*.

Enclose your **db** mailing label, too.

Write to:

Eloise Beach, *Circ. Mgr.*
db Magazine
1120 Old Country Rd.
Plainview, N.Y. 11803

• Every time we get away from projectors, it seems that our friends out there bring us back again with the mails, and we're glad.

This first letter was written on May 22 by Ken Stoltenberg of Electronic Engineering Services in Rochester, Minnesota.

Regarding your comments on lamp life, in the May db issue, I am wondering if you have ever come across a Sylvania projection lamp slide rule. The rule I have has a copyright date of 1962. This provides the relationship of lamp voltage to socket voltage, percentage watts to change in color temperature, and percentage light to percentage life. So—if lamp voltage equals socket voltage, then you have 100 percent watts, rated color temp., 100 percent light and 100 percent life. Now drop socket voltage 5 volts and you have 93 percent watts, -55 degrees in color temp., 85 percent light and a life of 185 percent—quite a change in lamp life! Should you run the lamp 5 volts above rated voltage, you then get 56 percent lamp life, according to the rule.

With regard to cooling the lamp after turn off, comments to us by General Electric indicated that this cooling did not affect lamp life. However, vibration is critical to the lamp at this time and the filament can be damaged easily if the projector is moved before the lamp has cooled.

At a Bolex service session several years ago, the comment was made that due to the inherent construction, all heat filters possess a high internal stress and therefore have a fixed life. I once had one explode just lying on the bench with no one near it.

You indicate that your next article will deal with 16mm projectors. May I make two pleas:

1. Encourage projector users to keep them clean, particularly the film gate. Film is expensive and one careless user can damage and badly scratch a film the first time through the projector. A small brush, with stiff bristles, can be held to the projector with a 3AG type fuse clip that can be mounted on the projector if the original manufacturer did not provide for this. Use the brush for cleaning the film gate and other areas of the film path. Take care not to scratch the film pressure plate.

2. Equipment manufacturers specify particular lubricants in various areas for a reason! May I suggest that if you don't know the manufacturer's

requirements, you may cause a malfunction or shorten the life of your equipment. PLEASE leave the 3-in-One oil in mother's sewing chest!

Keep up the good work. I will look forward to more of your articles.

Many thanks, Ken, for the information in your letter, and for your kind words. I'm familiar with the lamp slide rule, and I appreciate your mentioning it. Mine comes in a Sylvania Audio Visual Projector Lamp Pocket Guide. This is a 3-fold card containing information on Sylvania audiovisual lamps, including the rated wattage, the average life in hours, and the base type, and information on how to identify a defective lamp.

SYLVANIA GUIDE

While we're on that subject, let's quote just a bit from this informative guide.

Early failure: Lamp is clean and appears perfect in all respects except for broken filament. This lamp obviously has not been burned any length of time, if at all.

Leaker: A tiny leak in glass envelope has allowed air to enter the bulb. Milky, cloudy appearance identifies this condition."

Normal life failure: This lamp has blistered after it was used for a number of hours. Another effect that can result from normal life—a blackened bridge.

Lamp has obviously served normal rated average life. Note the blackening on top of bulb. If lamp was designed to burn horizontally, the tell-tale blackening is on the side of the bulb, indicating a normal life.

General Electric also made a similar rule. This one is a circular type and gives the same information. It is called *Stage/Studio Lamp Characteristics Calculator for approximate effect of voltage variation on Quartzline® and incandescent lamps*. The one I have is dated Aug. 1971.

On the reverse side, there are instructions for using the circular slide rule and some interesting information:

For voltages not shown, multiply both lamp and socket voltage by 10 or 100 to put them on the scale. For example, a 6-volt lamp operated at 5 volts is the same as a 60 volt lamp operated at 50 volts.

Note: Due to the variation between individual lamp types, the results shown are close (but not exact) approximations for any specific lamp. Indicated values are reasonably reli-

able between 90 percent and 110 percent "rated volts," with reliability decreasing as values depart from this range.

There is a bit more information on the reverse side which GE calls *Additional Information*:

1. The life rating of a lamp is actually the median life obtained by testing many lamps over a long period of production. At rated voltage, one-half of the lamps will burn beyond rated life.

2. Operation of a lamp on voltages higher than that for which it was designed can significantly shorten life or cause immediate failure. Quartzline lamps, in particular, should not be operated beyond 110 percent of rated volts.

3. With ordinary incandescent lamps, life at reduced voltage is predictably increased because burnout usually results from filament evaporation. With Quartzline lamps, however, increased life cannot be accurately predicted because life may be limited by factors other than filament evaporation.

4. Gradual blackening of the inside of the bulb during use is normal for incandescent lamps. Quartzline lamps do not blacken, unless operated under abnormal conditions.

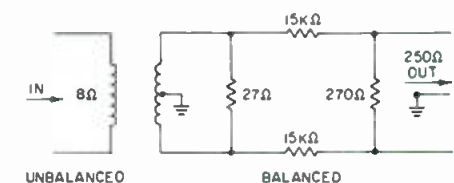
5. Bulb blistering is normal with some incandescent lamps toward the end of life. If a forced cooling system is used in the equipment, it should be checked regularly to prevent blockage of the air stream. Even partial loss of normal cooling can cause excessive blistering or premature failure.

6. Change in apparent color temperature of Daylight Dichro PAR lamps when voltage is varied will be about twice the scale indication.

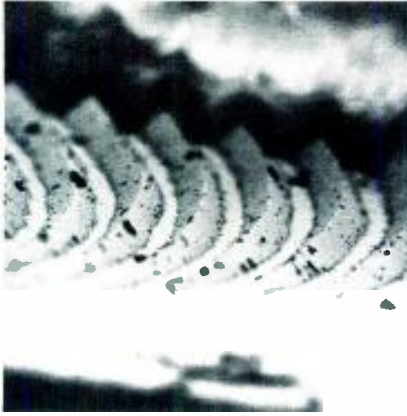
The second letter came from Jack B. Minkoff of Palo Alto, California.

What is the best circuit for an interface between a 16mm projector speaker (8 ohms) output (often furnished by means of a ¼ in. phone jack to a remote speaker) and a microphone (150 ohms) or line level 600 ohms input into a mixer or mixer amplifier?

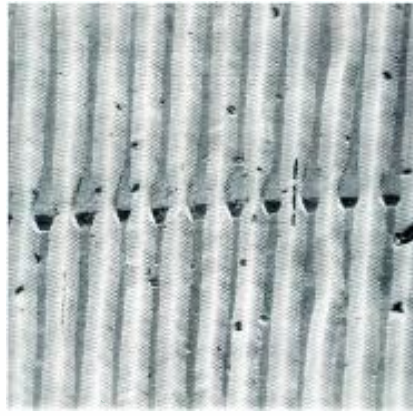
I am sure our readers have solved this problem in different ways. We would like to hear from any of you who would like to share the results. Here is one way, maybe not the best, but quite good.



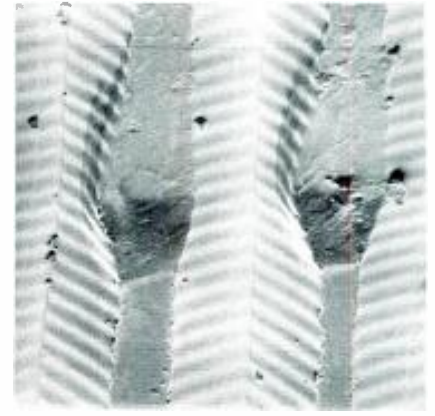
Thanks to all those who have written. We will continue to print correspondence as often as possible. ■



A pick-up's eye view of a disc, illustrating the very great depth of field and false perspective which the scanning electron microscope can be made to produce. (X160)



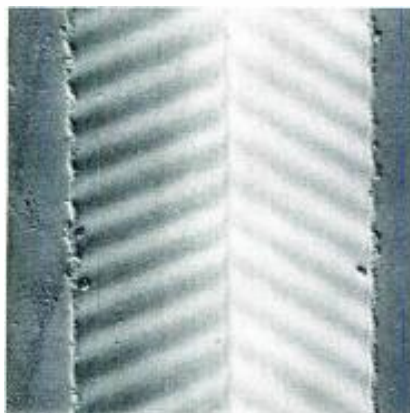
A small scratch made to look far worse than it probably sounds. The deformation of the groove wall covers about



10 wavelengths of the f.m. carrier, i.e., each lasts for approximately 1/3000 of a second. (X100 and X500)



A general view at approximately 45 degrees to the surface. The vertical and lateral shifts of the groove and the deviations of the f.m. signal superimposed on them can easily be seen. Although this record was new and apparently clean, dirt particles are very noticeable. (X100)



High magnification of a single groove revealing faint parallel lines, probably resulting from imperfections of the original cutting tool. The two rows of debris visible on the "land" at the top of the groove walls are also of interest. (X1000)

EDWARD HORN

In the CD-4 Groove

Metallurgy and microscopy reveal the tremendous detail which the CD-4 groove carries.

THE FINAL YEAR of one's degree course at Cambridge University concentrates the mind wonderfully. It is also alive with opportunities to investigate the unusual. My principal subject is the science of materials, but a major hobby is audio. This combination aroused curiosity about the demands made on the disc-recording process by CD-4 techniques.

Examination of the record groove by optical microscopy reveals only a part of the picture. The obtainable depth of field has practical limitations. So I sought the help of D.G.D. Gray,

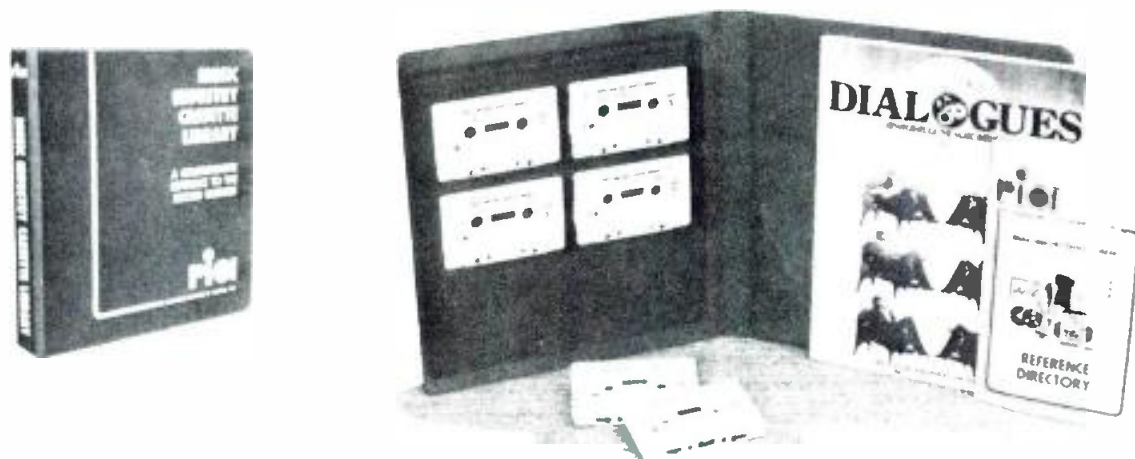
of the Metallurgy and Material Science Department of Cambridge University in preparing and observing portions of CD-4 discs in a scanning electron microscope.

A section cut from the disc is rendered conductive by electrically evaporating a small particle of gold over it in a vacuum chamber. If well judged, the film of metal which condenses onto the sample can be only a few atoms in thickness. The prepared specimen is then put into the microscope, where, after evaporation, it is scanned by a finely focused electron beam. The intensity of low-energy secondary electrons emitted from the sample varies with the surface morphology. By means of an electron detector and associated circuitry, an image of the surface is built up on a cathode ray tube, which is being scanned in synchronism with the beam inside the microscope.

Edward Horn is a third year undergraduate, majoring in Material Science at St. John's College, Cambridge University, England. His father is Geoffrey Horn, the well-known English hi-fi authority and reviewer.

a special offer for **db** readers!

A MUST
FOR
ANYONE
INTERESTED
IN THE
MUSIC
INDUSTRY—



Learn The Business - of Our Business!

Compiled from Recording Institute of America's interviews with key executives and "hit-makers", plus Reference Directory and Dialogue's Viewpoints of industry "stars".

Listen to the industry "pros" describe the workings of the Music Business. Hear the most respected attorneys of the entertainment field define and discuss the legal terminology of Recording Contracts, Songwriter Contracts, Professional Management Contracts. Over 3½ hours of professional reference... could be the most important 200 minutes of your life!

Plus... RIA Reference Directory, including sample songwriter affiliation forms, sample artist contracts, writer contracts, etc., in addition to a Directory of Record Manufacturers, Music Publishers, Personal Managers, Producers and Booking Agents. Also Record World's "Dialogues" with over 50 candid interviews from Record World magazine, and a cross-section of "star" personality interviews.

You get all the above (regularly \$49.95) for only \$39.95 for **db** readers.

***Interviews include:**

| | |
|-------------------|---|
| Pete Bennett | Promotion Apple Records |
| Sid Bernstein | Personal Manager and Promoter |
| Rick Blackburn | Dir. of Sales, Columbia Records |
| Terry Cashman | Pres. Cashwest Productions Inc |
| Bob Cato | V.P. Creative Services, United Artists |
| Kip Cohen | V.P. A&R, A&M Records |
| Al Coury | V.P. Production, Capitol Records |
| Al DeMarino | V.P., Music Department, CMA |
| Tom Draper | Dir. R&B, RCA Records |
| Kenny Gamble | Pres. & Producer, Phila Int Rec Co |
| David Giew | V.P., Marketing, Atlantic Records |
| Barbara Harris | Dir., Artist Relations, Atlantic Records |
| Emil LaViola | Prof. Mgt., Chappell Publishers |
| Michael Martineau | Booking Agent, Premier Talent |
| Mark Meyerson | A&R, Atlantic Records |
| Barry Olander | West Coast Prof. Dir., Jobete Music Co |
| Richard H. Roemer | Law Firm of Roemer & Nadler |
| Alvin Teller | V.P. Merchandising, Marketing Columbia Records |
| Peter Thall | Law Firm of Casper & Thall, P.C. |
| Ron Weisner | V.P. Artist Relations, Buddah Records |

... and many others

ORDER FORM — MAIL TODAY

Sagamore Publishing Co., Inc.
1120 Old Country Road, Plainview, N.Y. 11803

Please send [] copies of "**MUSIC INDUSTRY CASSETTE LIBRARY**"
at \$39.95 each.

Please Print

Name _____

Address _____

City _____ State _____ Zip _____

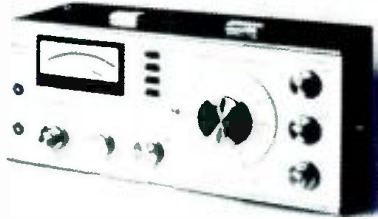
Total Amount \$ _____ Check/Money Order for \$ _____

10 Day Money Back Guarantee

db

RADFORD

Audio Measuring Instruments



Low Distortion Oscillator Series 3

A continuously variable frequency laboratory oscillator with a range of 10Hz-100kHz, having virtually zero distortion over the audio frequency band with a fast settling time.

SPECIFICATIONS:

Frequency range: 10Hz-100kHz (4 bands)
Output voltage: 10 volts r.m.s. max.
Output source resistance: 150 ohms unbalanced (plus 150/600 balanced/floating)
Output attenuation: 0-100dB (eight, 10dB steps plus 0-20dB variable)
Output attenuation accuracy: 1%
Sine wave distortion; Less than 0.002% 10Hz-10kHz (typically below noise of measuring instrument)
Square wave rise and fall time: 40/60 n.secs.
Monitor output meter: Scaled 0-3, 0-10 and dBV.
Mains input: 110V/130V, 220V/240V
Size: 17" (43cm) x 7" (18cm) high x 8 3/4" (22cm) deep
Price: 150 ohms unbalanced output: \$950.00.
150/600 unbalanced/balanced floating output: \$1070.00.

Distortion Measuring Set Series 3

A sensitive instrument with high input impedance for the measurement of total harmonic distortion. Designed for speedy and accurate use. Capable of measuring distortion products down to 0.001%. Direct reading from calibrated meter scale.

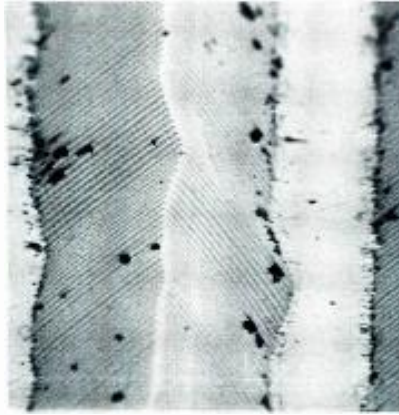
SPECIFICATIONS:

Frequency range: 5Hz-50kHz (4 bands)
Distortion range (f.s.d.): 0.01%-100% (9 ranges)
Input voltage measurement range: 50mv-60V (3 ranges)
Input resistance: 47Kohms on all ranges
High pass filter: 12dB/octave below 500Hz
Power requirement: 2 x PP9, included
Size: 17" (43cm) x 7" (18cm) high x 8 3/4" (22cm) deep
Price: \$770.00

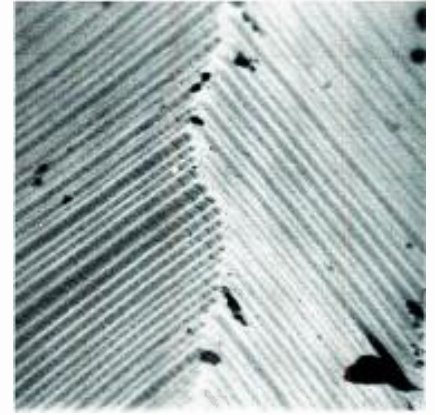
AUDIONICS

10035 NE Sandy Blvd.
Portland, Oregon 97220

Authorized U.S. Sales Agency for
Radford Laboratory Instruments



Both taken looking along a groove at a few degrees to the surface, giving the same false impression of distance as a



telephoto lens. This exaggerates both the modulation of the groove and the frequency deviations of the f.m. carrier.

Controls permit movement of the sample within the evacuated chamber. One can select electrically the desired magnification to yield any number of views on the screen—to be photographed as desired. Adequate depth of field is obtained, but one has to be aware of the gross perspective distortion which can take place.

The results indicate the tremendous detail carried in the CD-4 groove and maybe clear the need for a playback cartridge capable of coping with this wealth of information.

FURTHER NOTES ON CD-4

We learn from John Eargle of JME Associates that A & M Records has made a long-term commitment to CD-4 and intends to issue their quadriphonic disc product only in the CD-4 format.

Increased software activity has been evident from RCA and the WEA group as well, and the total U.S. CD-4 catalog has grown from 194 in June of 1974 to 258 by the end of December 1974. As of the first quarter of 1975, the U.S. catalog increased by 22 items to a total of 280.

On the consumer information level, a comprehensive 28-page CD-4 *Handbook* has been developed and will be available to CD-4 dealers. Its aim is to explain to the interested consumer what quad is all about—and especially how CD-4 differs from the matrix disc formats.

Those wishing information concerning the CD-4 *Handbook* should contact Matsushita Electric Corporation of America, 1 Panasonic Way, Secaucus, New Jersey 07094, or JVC America, Inc., 50-35 56th Road, Mas-

path, New York 11378.

According to Eargle, the last six months have also seen considerable interest in CD-4 cutting technology. Two significant improvements were shown to the recording world at this spring's Audio Engineering Society Convention in Los Angeles (May 13 thru 16).

That includes the new Mark III cutting system developed jointly by JVC, RCA and Matsushita in Japan. The significant features of this new cutting package are its low price (in the \$30,000 range) and the ease with which it can be interfaced with a standard cutting system. The modulator design is a unique kind of modulated phase lock loop, exhibiting greater linearity and dynamic range than its predecessors.

In parallel with JVC, RCA Records has developed its own modulator unit using the same phase lock-loop principle. Both of these units underscore very clearly the fact that CD-4 cutting technology has indeed been simplified—and improved—and is well within the budget of many recording companies and studios.

Eargle also announces that the Ortofon Company of Copenhagen, Denmark, has made available its new DSS 731 cutting head, especially designed for wide range, low crosstalk cutting for CD-4. This new cutting head was demonstrated at the recent Audio Engineering Society Convention in London.

On the playback hardware side, Eargle concludes by reporting on continuing developments in cartridge design by many companies, particularly Stanton and Empire. Both are advertising new models which optimize the performance requirements of both CD-4 and stereo. ■

The New York Experience

Sight, sound, vibrations, combine in an exciting hour of New York sensations.

MANY TIMES, when an exhibit is billed as multi-sensory, the reference is made to indicate that several different methods are utilized to interest the visitor. The term usually means that two senses will be affected by the presentation—sight and hearing. There is one show, however, that means what it says—literally—when it is described as multi-sensory. It all results in a most exciting way for anyone to really have a most unique and memorable *New York Experience*.

New York Experience is located in a specially built theater on the lower level of the McGraw-Hill Building on the Avenue of the Americas at Rockefeller Center. It is one of only three similar presentations in the world: one in San Francisco, another in Hawaii, and the third is the relatively new show in New York. *New York Experience* is a Trans Lux/Bing Crosby enterprise produced by Electrovision Productions, Inc. The show opened in 1973, and will be a permanent exhibit; we urge you not to miss it. The presentations are hourly and take just under an hour to tell the story of New York.

As you walk in, there is a replica of old New York, with a view of a subway station and an elevated train that ran on 6th Ave., the former name of the street you are on. The corner where you will walk has the old stores, an umbrella-covered pushcart, and benches to sit on while relaxing and waiting for the theater show to begin.

SOUNDS IN THE DARK

The theater is in semi-darkness as the visitor enters. The screen is very wide and curved. As you look around, the side walls appear quietly normal, and the ceiling seems black with only a few identifiable lights. The seats swivel all around and are very comfortable. In a few moments, as the audience is being seated, there are sounds of distinguishable voices, children and adults. It sounds as though a few of the people in the theater are



A partial view of the sophisticated equipment in the projection booth.

speaking just a mite loudly. Then the theater starts to darken. It now becomes apparent that some of the sounds are not within the theater itself, but seem to be coming from outside. You realize that this has been the beginning of the show itself which was sneaking into full presence so carefully. The presentation had begun before you were aware of it. Then the surprises begin.

The seven screens at the front light up, sometimes displaying stills, then dissolving quickly at different speeds to form a vast panorama of New York harbor. The result is a spectacular view that seems to curve right around the visitor. Now the side screens become active. They descend to cover the walls or rise back out of view as the history of New York unfolds from earliest days to the present, introducing a multitude of special effects.

At one moment, an extremely bright thrust of lightning is seen, almost blindingly. It starts overhead and strikes the Empire State Building. The thunder accompanying the flash is momentary, but frighteningly close and realistic. As the images change both on the front screens and on the sides, the audience can swing the seats easily to follow the action and

the sounds coming from various locations throughout the theater.

In one scene, realism is enhanced as image and sound tell the story of Washington's crossing the Delaware, while real fog rolls into the theater from under the front screen. The scene envelops the audience as the people feel the fog.

SUBWAYS

In the modern city, no tale could be told without mentioning the subway systems running under the streets. It is a part of a way of life. As the presentation focuses on the underground behemoth, the noise and vibration are both heard and felt. During one sequence, a subway comes roaring in and the audience again becomes a part of the show. Not only is the deafening sound heard in all its realism, but low rumbling can actually be felt—a sensation rather unique for audio/visual displays. A similar sensation occurs during a bombardment. The rumbling sound can be heard, and the blast can also be felt.

Among the visual and environmental devices there are bubble machines, strobe lights, a car horn, realistic fire effects devices, special lights and an electronic organ controlled by sound and many more, all part of a dazzling display.

WHAT MAKES IT WORK?

Planning this complex presentation which runs almost without a hitch, 82 showings (7 days) a week, took a tremendous amount of engineering and design know-how. The entire show is automated—completely—except for the technician pushing the start button each hour, and then making sure the equipment, film, tape, slides, etc. are all back at the start point about 50 minutes later. He also knows what to do when problems arise and maintains the system and the individual components. But once the show is under way, everything happens automatically.

With the start of the show, a ¼-in.

tape cartridge (audience murmur) and a 1/2-in. magnetic tape begin to roll at 15 in./sec. on one of two Scully tape decks. The 1/2-in. tape has four audio tracks (which were made in a reduction mix from an original 16-track recording) and a cue track (between tracks 2 and 3) which is only 0.03 in. wide. It is this tiny stripe on which the rest of the show depends. It contains digital data which feed to the heart (or brains) of the system, a model 990 Command Performer computer developed by Arion Corp. of Minneapolis, Minn., specifically for this type of application. (In addition to San Francisco and Hawaii, they also have their equipment installed at Disney World and in several countries of Europe including Russia, as well as in Mexico, Canada, South America and Japan, plus some smaller projects at schools and universities.)

The 4-track sound passes through Arion preamplifiers, Crown DC 300A amplifiers, and is distributed through JBL speakers located at the front of the room. Dolby equalization was used in the recording and playback and four Sound Craftsman graphic equalizers are included in the reproduction system to help with the contouring of theater acoustics. There are also two mono-mixes of the 4-track

sound. One is used for separate bass reinforcement (which deserves special mention) and the other is used to activate four 3-color organs (by Mobilcolor), located at the sides of the room. These lines are also under the control of the computer and triggered at preset times.

The 1/4-in. tape cartridge (player by International Tapetronics) is fed through 12 Atlas Sound WT-15 all-metal speakers with weatherproof woofers, high efficiency drivers, and crossover networks. These units are located under the seats of the audience and are first heard at the very beginning of the show when the sound of audience chatter sneaks in to the surprise of the visitors. These outdoor units were chosen because of the real fog that comes rolling in from under the front screens during the show blown in by four fog generators). Cone speakers could never last under this assault of moisture for very long. The under-seat speakers are also used during the performance.

BASS REINFORCEMENT

The bass reinforcement does require special mention, as the speaker is unique. It is the largest in the world, and is, in fact, so large, that it had to be built on the site. In the story be-

low the floor of the theater, a 26-ft. long unit was constructed with an opening of 14 x 16 ft. It is used during sound sequences such as cannon fire, but is basically most effective during the sound of a subway "running" directly under the theater.

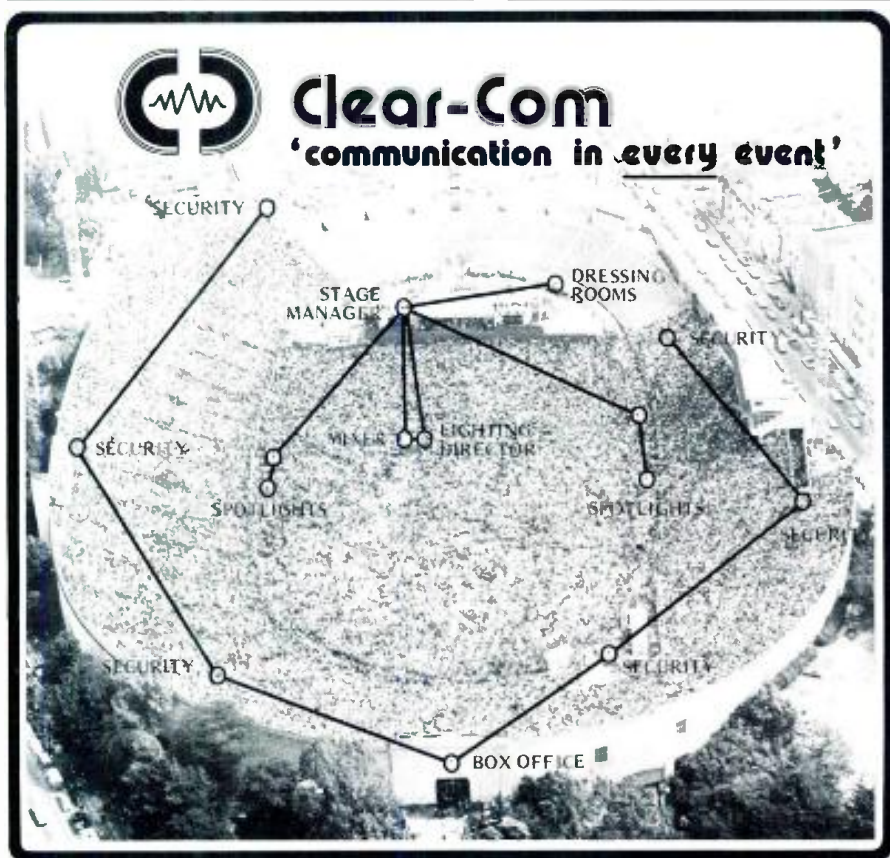
The speaker has a cut-off at 20 Hz. At that frequency the ear is unable to hear, but the sound can be felt, as those in the audience know if the subway has been one of their means of transportation. The floor literally vibrates, just as a subway platform does. The bass speaker is cut in on cue from the computer almost a dozen times during the show (during the cannon shot for a period as short as about 0.1 second).

You might be wondering how a show that runs just a little short of an hour can be handled at 15 in./sec. on one tape deck. It isn't. One of the special automatic features of the system is that the second machine is cued up and ready to go on a start cue from the computer. Once it gets going, a cue on the second tape automatically stops the first machine. (This first tape can then be recued to the beginning and is ready again for the next show.) The change-over time: less than 1/10 sec.

PROJECTION

The projection system is also unique. There are thirty slide projectors set up in the projection booth, using a total of about 2,500 slides. The units are controlled by dimmers and dissolvers which can change images at five independent speeds (instant, 2, 4, 8, and 16 seconds). Every projector is controlled by its own fader, but even these are not just faders. Each is a complex unit involving a precision analog computer with eleven op amplifiers. The double-layered front screen can handle seven side-by-side images. These are so accurately adjusted that panoramic images across the entire spread can dissolve into another and look as if one dissolve action took place, but there actually are fourteen dissolve units operating at such a transition point.

The three A.V.E. 16-mm film projectors are also unique. First, they were modified to permit interlock operation. These are run by selsyn motors and are made to stop and start instantly. Since about half the time of the presentation is spent on 16mm film, the projectors use Xenon illumination sources which are ozone-free (requiring no special ventilation) and no special cooling. The films have magnetic sound tracks and the preamplifiers in the projectors were modified slightly to provide the best sound possible for the audio system. Another



Clear-Com
Portable Intercom System

A Division of Lumiere Productions
759 Harrison Street, San Francisco, Ca. 94107
(415) 989-1130

Circle 32 on Reader Service Card

internal modification was the addition of new aperture plates specially cut for this show.

OTHER FEATURES

Some other modifications and provisions go into making the presentation as smooth as it is. The projectors are provided with special loop setters which operate automatically, when the pull-down claw is retracted, at just 1/50 of a second separation from the pull-down mechanism. That ensures smooth running of the film in this constant start/stop operation. Another special feature is a magnetic foil stop on the film with just 4 in. of black between film portions. No slippage can be tolerated here.

The projectors run at the normal 24 frames per second, but usually the sound drums start to rotate when the film is under way. In these units, the sound drum is specially made to get started with a unique automatic tension device so the sound head gets going instantly with the start of the projector. As another control function of the computer, the sound feed from the projectors is not cut into the system until the projectors are triggered to begin rolling, thus keeping the speakers off the line until the sound is about to begin. The functioning of the projector motion, the com-

puter and the sound is so smooth that it is unlikely that the viewer will be aware of the 20 times the images change from slides to film and back.

In addition to starting tapes, cueing film projectors, cutting sound in and out, and setting off strobes or flashers, the computer, in its more than 3,000 cues, is called upon to lower and raise four sidewall screens, turn on rotating wheels in front of slide projectors, cue super-8 projectors around the room, start star-projectors, turn on and off lobsterscopes, turn rotating mirror reflectors above the audience, and trigger more than 50 special effects devices in total, not counting the chasing lights around the front screens, etc. It is estimated that if all the special effects were triggered to activate simultaneously, the total power drain would be more than 200 kilowatts. However, there are more than 120 relay circuits in the control system to help activate only those devices needed at any one time.

The thunder, lightning, fog, subway, cannon, and the vast special sound and visual effects make the *New York Experience* a most novel multi-sensory audio-visual experience—not to be missed by either visitor or New Yorker. Experience New York in less than one hour—comfortably, entertainingly. ■



We take the wait out of erasing lots of tape



New Model 70 cleanly erases any 7" reel, cartridge, or cassette in one pass over the continuous belt. Your tapes will be as clean as new in 4 seconds. For audio, video, and data tapes.



GARNER INDUSTRIES
4200 North 48th Street, Lincoln, Nebraska 68504

Circle 25 on Reader Service Card

Why does RCA Records use the Amber Audio Spectrum Display?

RCA Records uses several Amber Audio Spectrum Displays in various applications in their Hollywood, Nashville and New York studios. Larry Schnapf, Manager of Recording for RCA Records, explains some of the applications:

"We use the 4550 in our Tape Mastering rooms both as a production tool and to spot potential problems. We often have to produce an equalized tape to match a domestic release to a foreign one. The spectrum display shows us where and how much to equalize and using the two memories we can very closely duplicate the previous characteristics." As a problem spotter the peak responding nature of the unit, with its memory, captures transients that a VU meter would normally miss. After considerable experience we have determined what frequencies will cause high end distortion, overloading and stereo phase problems in discs and can recognize this potential problem and apply the subtle corrections necessary before mastering."

If you'd like to know more about the Audio Spectrum Display or to evaluate one in your studio contact Amber for the name of a dealer near you.

Amber model 4550 Audio Spectrum Display

AMBER ELECTRO DESIGN LTD.
1064 chemin du Golf
MONTREAL QUEBEC CANADA
H3E 1H4
(514) 769 2739

Circle 26 on Reader Service Card



TEAC

Multitrack Recording Equipment makes possible a kind of music that can't happen any other way. But you don't have to rent studio time. You can build a complete TEAC multitrack recording rig at home with the A-3340S 4-track multichannel recorder with Simul sync; the Model 2, a 6-in, 4-out mixer with filters, pan and multiple patch points; 2-track mastering recorders from the A-3300S 2T to the A-7300 2T; the ME-Series of electret condenser microphones, omnidirectional and cardioid; plus associated accessories... all the essential gear you need to make your inner musical perceptions audible reality.

Getting the most from the technology to further the art is as much a matter of talent as tools. At TEAC, we make those tools with all your needs in mind, including the assumption that you have more talent than money. Because the art is always a struggle. But access to the technology doesn't have to be, and your TEAC retailer can demonstrate why. To find the one nearest you, just call (800) 447-4700. In Illinois, call (800) 322-4400. We'll pay for the call. If you're just getting started with gear like this, we recommend the 3 hour taped course on Home Recording Techniques offered by the Recording Institute of America, New York, N.Y.

Where art and technology interface.

TEAC®

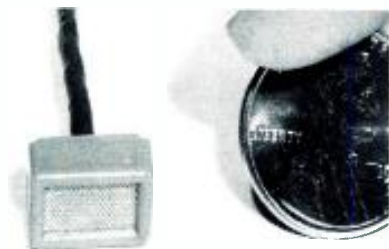
The leader. Always has been.

TEAC CORPORATION OF AMERICA
7733 Telegraph Road, Montebello, California 90640

©TEAC 1975

db new products & services

SUBMINIATURE MICROPHONE



● The miniaturization possibilities of electrets and transistors are combined in the Minimic to produce a device measuring only .460 x .330 x .326 inches and weighing 0.75 oz. A slightly rectangular shape keeps it from rolling around, lessening clothing noises when it is used as a lavalier. The case is constructed of smooth, slick plastic so that clothing will glide over it. The electret is housed inside a silicone rubber boot, isolating it from the case. Cable is constructed with a polyurathane outer sheath for strength and flexibility, of pure copper braid with 99 percent wrap. Inner conductors are covered with flexible rubber. Frequency response is ± 1 dB 50 Hz to 3kHz. Operates on d.c. voltage or by means of a hearing aid battery.

Mfr: Transound Company
Circle 50 on Reader Service Card

3500W F.M. TRANSMITTER



● Model BF-3.5K 3,500 watt f.m. broadcast transmitter is driven in the IPA stage by 10-watt B-910 exciter, using a pair of parallel connected type 4CX250B pentodes. A type 3CX3000/A7 zero-bias triode is used in the power amplifier stage operating in grounded-grid configuration; no grid bias or screen grid power supplies are required, and no neutralization. P.A. stage efficiency occurs from 2,000 to the maximum 3,500W output power levels. Other features include automatic recycling, memory-type status indication and an output reflectometer. Start/stop functions are con-

trolled by illuminated pushbuttons. Self-contained BF-3.5K offers full metering of all essential parameters, with remote control adjustment and metering terminations. Models for either single- or three-phase primary power operation are available.

Mfr: McMartin
Circle 51 on Reader Service Card

CASSETTE EDITING AND REPAIR KIT



● Repairs may be made without disturbing cassette components with this kit, intended to fix breaks more than six inches from the hub. As a precision editing block, one side of the block has a diagonal cutting guide at 45 degrees for normal splicing and a butt cutting guide at 90 degrees for close editing. A five-inch channel groove holds the 150-mil tape. One end of the pencil-like kit features a hexagonally shaped spindle for manually driving the cassette tape via the hubs. Six adhesive-tipped polyester picks for retrieving tape ends lost inside the cassette housing and six pieces of 150-mil splicing tape, pre-cut to proper length, are contained inside the kit.

Mfr: 3M
Price: \$3.10
Circle 52 on Reader Service Card

STEREO/MONO POWER AMPLIFIER



● A pushbutton bridging switch effects the mono/stereo change on model 500D power amplifier, one of a series of new models from this manufacturer, all conforming to the FTC trade regulation rule on amplifier power-output specifications, carrying 4-ohm FTC power ratings. The unit

features a thermal system using a dual speed thermostatically controlled fan in a low turbulence environment for quiet operation; thermal resistance from transistor case to ambient is 0.2 degrees C/W. Each output stage uses ten 150W single-diffused power transistors, eliminating current limiting circuits, with separate plug-in circuit modules utilized for each channel. A rocker-style circuit breaker is mounted on the front panel. The 15mHz i.c. operational amplifier, similar to those used in analog computers, is placed at the front end.

Mfr: BGW Systems
Price: \$799.00.
Circle 53 on Reader Service Card

FREQUENCY COUNTER



● Six-digit portable model 5755A frequency counter capable of direct counting to beyond 512mHz. The instrument weighs five pounds and measures 3 1/4 x 8 x 7 3/8 inches. It operates from a.c. lines, a d.c. supply or from an automobile cigarette lighter socket.

Mfr: Ballantine Laboratories, Inc.
Price: \$745.00
Circle 54 on Reader Service Card

L.E.D. METER



● This seven-point red l.e.d. meter features -15 to +3 vu in 3dB steps. Simplicity of construction keeps the unit rugged; there are no bearings, jewels or pivots. The meter features mechanical inertia with no overshoot, and fast response peak detection with slow decay, for accuracy. The meter is supplied in vu or S with vertical or horizontal scale. Power required is 12-15 Vdc 30 milliamp.

Mfr: Pulse Dynamics Mfg. Corp.
Price: \$10.00
Circle 55 on Reader Service Card

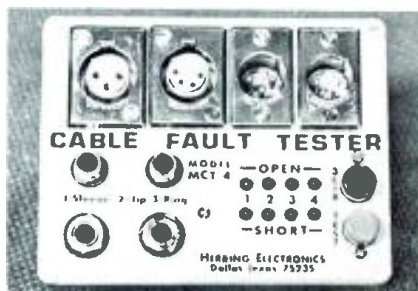
AUTO FLANGER



● As an alternative to phasing, the Auto Flanger offers a precise mathematical relationship between the time delay and the resulting comb filter response, causing random program material (such as cymbals) to take on musical tonality. The manufacturer claims that the device is capable of producing true flanging repeatably and economically without the use of two tape decks or digital delay lines. Through the use of an internal regulator, it may be implemented into any system and can be incorporated into a standard console or rack.

Mfr: MXR Innovations
Price: \$285.00
Circle 58 on Reader Service Card

CABLE FAULT TESTER



● Compact battery operated MCT-4 cable tester will simultaneously check all conductors in three and four pin "Cannon" type connectors, two and three circuit 1/4-in. phone plugs, as well as RCA phono plugs. An l.e.d. matrix displays the i.c. operated logic circuit. The tester is designed to consider resistance greater than 500 ohms as an open, and less than 500 ohms as a short. Long low impedance microphone cables may be tested under conditions similar to their operating conditions. The unit scans for all possible open and short conditions over 400 times a second.

Mfr: Crossroads Audio
Price: \$89.95
Circle 59 on Reader Service Card

ELECTRONIC MUSIC SYNTHESIZER



● With a 1 volt-per-octave control and a linear keyboard output, the model 300 synthesizer allows any number of oscillators, filters, and modules of other functions to be controlled from a keyboard while tracking together at a constant musical interval. Any external tuning control will change with oscillator pitch by the same amount, regardless of keyboard position. The keyboard spans a full 5-octave range. It has exponential or linear portamento (glide) selection and one-octave range tuning control with instant zero return. Voice outputs are linear over the whole range. Fourteen output jacks are supplied. The synthesizer also contains an envelope generator with four independent controls over the dynamics of each note; a voltage control filter with a 16Hz-16,000Hz range; a voltage control amplifier with over 100dB of accurate gain control; balanced modulator and attenuators; voltage control oscillator; sample/hold, clock, noise generator; dual mixer; dual LFO, lag, inverter; case and back plane connectors; power supply. The elements may be purchased separately.

Mfr: Aries, Inc.
Price: Kit: \$895.00
Wired: \$1,500.00
Circle 60 on Reader Service Card

PARAMETRIC EQUALIZER



● This vari-band equalizer has five simultaneous operational sections. Each section has ± 15 dB of boost or cut, bandwidth control from 16dB/oct. to 2dB/oct., bandcenter control in/out switch and red indicator l.e.d. for fast comparison of any section or all sections simultaneously. Bandcenter frequency sweep ranges for the five sections are 20-100Hz, 100-600Hz, 600-3kHz, 3k-6kHz, and 6k-20 kHz. All circuitry is operational amplified and uses no transformers or inductors.

Mfr: Multi-Track
Price: \$450.00
Circle 61 on Reader Service Card

One of a series of brief discussions by Electro-Voice engineers



The INCREDIBLE ELECTRET

Many engineering innovations have the unfortunate habit of solving old problems only to create new ones. The history of the condenser microphone is a case in point.

The introduction of the electret condenser mike, with its permanently charged diaphragm, eliminated the troublesome power supply and problems caused by other product complexities. Well-made electrets had the physical durability of dynamics—but the first generation of products failed in the area of reliability. Performance specifications of early electrets were severely deteriorated by heat and humidity, both in short-term, temporary loss of operation, and more gradual, but irreversible, long-term deterioration.

Now, with the introduction of a new generation of professional electret microphones, such as the Electro-Voice CS15 and CO85, the cycle of problem and solution finally seems broken.

These new Electro-Voice electrets are the results of exhaustive research into electret diaphragm materials and charging techniques; research that led E-V to develop a combination of a unique fluorocarbon material and a proprietary charging process that produced greater charge stability and better heat/humidity resistance than had been possible in any previously marketed electret condenser mike.

The benefits of E-V's new electrets were more apparent after I took the microphones with me as a part of our field testing under "worst case" conditions. Even after being left in the trunk of a parked car in Las Vegas (where temperatures reached 180°) for six hours, and exposed to the tropical humidity of Florida and Hawaii, E-V's electrets showed no measurable charge degradation.

For the ear with a brain.
 Electro-Voice, Inc.
 A GULTON Company
 Dept. 853 BD, 686 Cecil Street
 Buchanan, Michigan 49107



Circle 11 on Reader Service Card

What would you expect an IMA to do?



- Perform SMPTE intermodulation analyses quickly and easily, even in the millivolt range?
 - Measure amplifier noise?
 - Measure transistor noise?
- Evaluate magnetic tape drop-out?
- Test oscillator amplitude stability?
- Measure tape recording distortion?
- Evaluate phono stylus wear and tracking?
- Test electromechanical transducers for intermodulation?

The Crown IMA does all of it. Internal intermodulation distortion is less than 0.005%. Write us for more complete information and application notes.



1718 W. MISHAWAKA ROAD ELKHART, INDIANA 46514 219-294-5571

Circle 33 on Reader Service Card



THE NAME AND THE PRODUCT THAT SETS THE STANDARD FOR P.A. EQUIPMENT

Whatever your PA needs, from a small office to large auditorium, with amplifiers in every power range, including mobile, Precision Electronics delivers the product and value . . . including an entire line of accessories. Get all the facts, without obligation, on the "right sound" for your needs. Complete and mail this coupon today.

NAME _____
 COMPANY _____
 ADDRESS _____
 CITY _____ STATE _____ ZIP _____

Mail to: PRECISION ELECTRONICS, INC.
 9101 King St., Franklin Park,
 Illinois 60131



Circle 34 on Reader Service Card

new products & services (cont.)

POWER AMPLIFIER



• This high-power rack-mountable amplifier is available in two models. Model SR105A provides both direct-coupled speaker output, 200 watt continuous rms and transformer-coupled 150 watt rms constant voltage 70-volt output. Similar model SR105B permits direct speaker coupling only. The amplifiers are capable of delivering 200 watts rms to a four-ohm load and may be interconnected with additional units to provide the greater sound power required by especially large coverage requirements. Direct-coupled frequency response is flat, 20 to 20,000 Hz, ± 1.5 dB. The amplifiers are protected against short or open circuit loads and can operate at full power at ambient temperatures up to 42 degrees C. without derating.

Mfr: Shure Bros, Inc.

Price: SR105A: \$348.00

SR105B: \$321.00

Circle 56 on Reader Service Card

DIGITAL AUTOMATION SYSTEM



• Digimation series 2000, a complete digital automation system for a.m., f.m., catv, sca, and other audio applications, features state-of-the-art solid state audio switching and built-in 25 Hz tone sensing, eliminating the need for external sensing equipment. Up to eight sources of reel-to-reel or cart machines may be connected in any configuration. The 16 event memory is impervious to power failures. The system also contains adjustable silence sensing, a priority interrupt function, vu meters, internal monitor amp and speakers (switchable to PGM, CUE, and AUX), and bridging unbalanced inputs with 600 ohm balanced outputs.

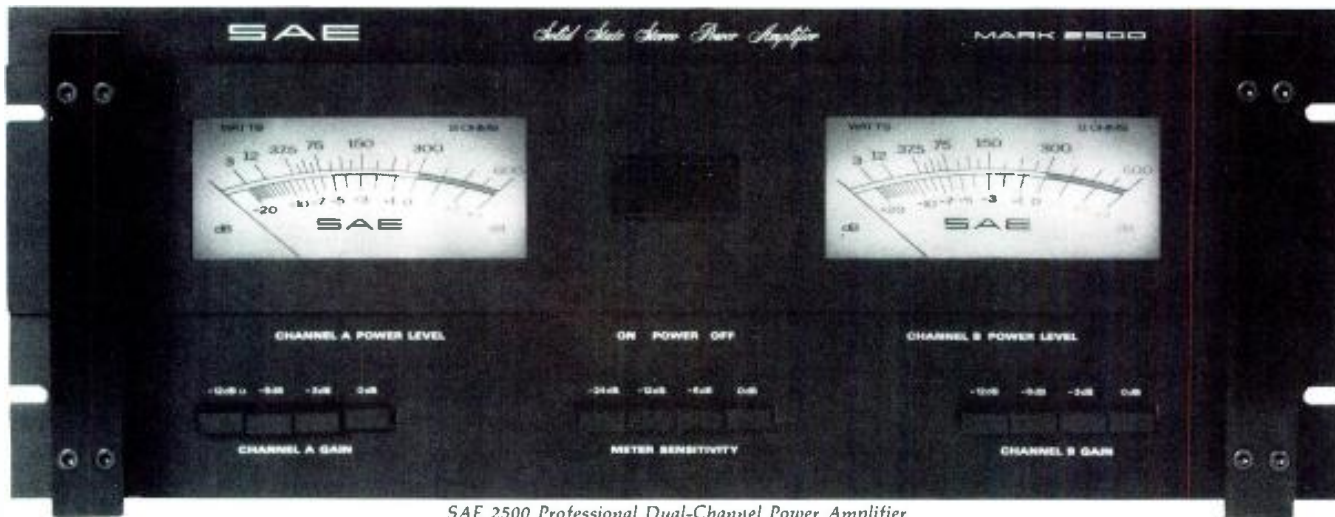
Mfr: Audio/Video Products

Price: Stereo: \$1,950

Mono: \$1,550

Circle 57 on Reader Service Card

Powerful alternative.



SAE 2500 Professional Dual-Channel Power Amplifier

When you compare power amplifiers, you have to look at the hard facts. The SAE 2500 Professional Dual-Channel Power Amplifier has them—top power, specifications, reliability and features that make it the most "powerful alternative."

Power. 450 Watts RMS per channel, both channels driven into 4 Ohms from 20Hz to 20 kHz at no more than 0.1% total harmonic distortion. Or, 300 Watts RMS per channel, both channels driven into 8 Ohms from 20Hz to 20 kHz at no more than 0.05% total harmonic distortion.* Plus, a new, smaller wide-channel power transformer coupled to 4 computer-grade capacitors for a power supply that varies no more than 10% from no load to full load. (For extra protection, there are relay and thermal cut-out devices.)

Features. Feedback level controls assure a constant input impedance of 50k Ohms and reduce the noise figure to more than 100dB below rated output in all positions. Loudspeaker protection relay-activated circuit automatically disconnects speakers in case of \pm DC outputs. Plus, direct power reading VU meters and forced air cooling.

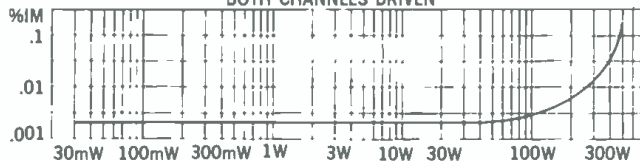
The SAE 2500 Professional Power Amplifier weighs only 58 lbs. making it practical for portable sound reinforcement, public address, communications and recording applications.

Specifications.

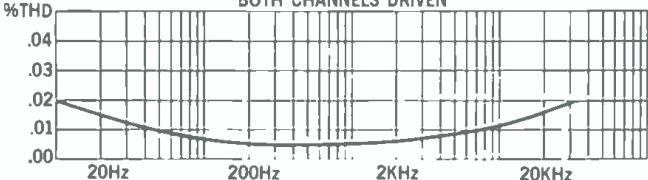
| | |
|---|---|
| IM Distortion from 250mW to rated power at 4 or 8 Ohms with any 2 mixed frequencies between 20Hz and 20kHz at 4/1 voltage ratio | 0.05 Ma* |
| Frequency Response at rated power | \pm 0.25dB 20Hz to 20kHz |
| Noise | Greater than 100dB below rated power |
| Transient Response of any Square Wave | 2.5 μ sec rise and fall time |
| Slew Rate | 40 V μ sec |
| Dimensions | Front panel 19"W x 7"H Chassis 15 "D (excluding handles controls and connections) |

*These specifications comply with FTC requirements for power amplifiers

2500 INTERMODULATION DISTORTION @ 8 OHMS, FULL POWER 49V RMS BOTH CHANNELS DRIVEN



2500 TOTAL HARMONIC DISTORTION @ 8 OHMS, FULL POWER 49V RMS BOTH CHANNELS DRIVEN



Reliability. The SAE 2500 gives you high current capability with Parallel-Series-Output Circuitry (PSO)—without loss of wide power bandwidth, low leakage current or super-high slew rate. Sixteen triple-diffused output transistors have an electrical and thermal SOA 50% higher than maximum design requirements for reliable high demand capability. This configuration can handle anything from continuous full signals to highly reactive surge loads—all day long without failure or overheating. Dual relay disconnect circuits and plug-in board design further assure reliable performance.

The professional alternative.



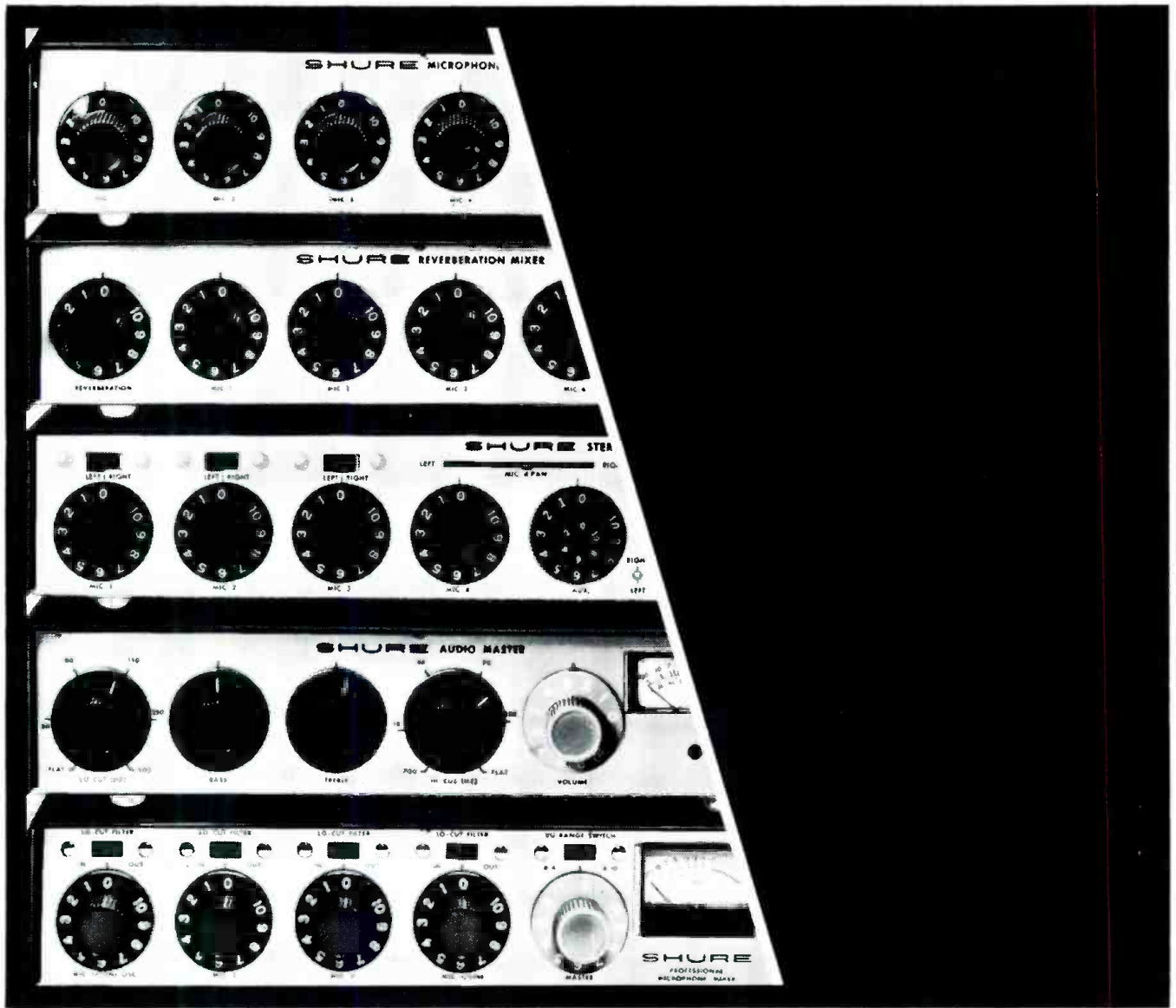
Scientific Audio Electronics, Inc.
P.O. Box 60271
Terminal Annex
Los Angeles, California 90060

DB/8/5

Please send me the reasons (including available literature) why the SAE 2500 Professional Dual-Channel Power Amplifier is the "Powerful Alternative."

Name _____
Address _____
City _____ State _____ Zip _____

Circle 36 on Reader Service Card



Rack 'em up.



For studio, broadcasting, recording, or public-address, Shure audio control components offer more features and more performance, dollar for dollar, than similar equipment. And—just as important—Shure audio components are easier to work with. Their compact size and versatility equip them for an extremely wide variety of audio control applications—and built-in input-output flexibility means quick set-up anywhere. For a permanent installation or a component system that can be adapted to meet any need, Shure has the right combination. To obtain a copy of the Shure catalog, see your dealer or write:

Shure Brothers Inc.
222 Hartrey Ave., Evanston, IL 60204
In Canada: A. C. Simmonds & Sons Limited



Manufacturers of high fidelity components, microphones, sound systems and related circuitry.

Circle 35 on Reader Service Card

Operations of Moog Synthesizer Modules And Components

Familiarity with the functions of synthesizer modules enables the user to select a custom-planned instrument.

IN TEACHING the operation of synthesizers in several schools, I have found that a desirable first step is to take each module in the synthesizer and describe its operation. Thereafter, the different interconnections can be studied after the student has a working knowledge of each module.

Here we describe the typical modules found in a medium-sized synthesizer, in this case, one manufactured by the R. A. Moog company, although other brands are very similar. The modules are as follows: oscillators, mixers, keyboard, voltage-controlled amplifier, envelope generator, filters, ring modulator, envelope follower, and sequencer. The last three modules are extras in the Moog synthesizer. The ring modulator and the sequencer are usually mounted in separate cases. They are included in other manufacturer's synthesizer models, however, and are basic components in electronic music procedure. For that reason they are included here.

A purchaser of a modular synthesizer may select any set of modules he prefers and thus have a custom synthesizer from "off-the-shelf" components. Most customers prefer to take the advice of experts and accept a standard complement of modules in a specially built cabinet. Such a standard complement may be purchased by number from most manufacturers

THE MOOG OSCILLATORS

The Moog model 901-A oscillator controller is, in effect, an amplifier with the special capability of taking the

algebraic sum of all of the inputs presented to it. There are five such inputs: the three jacks marked *control voltage* and the two controls marked *fixed control voltage*. The two controls are a range switch and a vernier, both of which are marked off in volts. The summing amplifier takes the algebraic sum (accounting for the sign and the magnitude of each component) and then generates a current proportionate to the sum. The current is a voltage-controlled current.

It is this voltage-controlled current that is actually fed to the model 901-B oscillator. The oscillator contains a capacitor which stores this current as it is fed in. As the capacitor fills or charges, the level of electrons or charge increases in the capacitor. A level detector senses when the capacitor is full and rapidly discharges the capacitor. This slow charge and rapid discharge produces the sawtooth wave, the basic waveform in the Moog oscillator. The switch on the panel of the 901-B selects one of six different capacitors, thus selecting one of six different charge rates. The knob beneath the switch is a vernier for that control.

The other three waveforms (sin, triangular and pulse waves) are generated by waveform modifying circuitry from the basic sawtooth waveform. Thus all waves have exactly the same frequency and are in phase. They may be used simultaneously for performing synchronized control functions.

Different models of synthesizers have slightly different oscillators. The difference is more in appearance than operation.

In the Synthesizer 2, the oscillator is a one-piece unit. In the Synthesizer 1, however, the oscillator appears to be constructed from three modules. That is not actually the

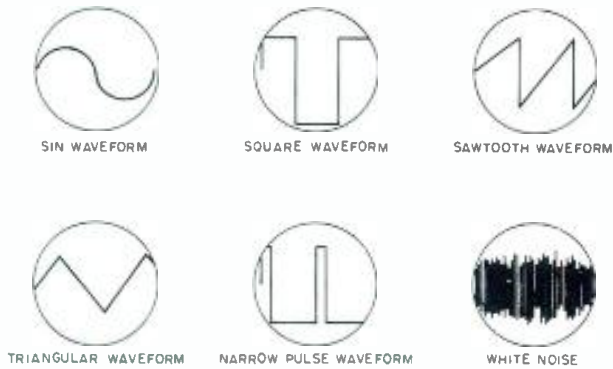


Figure 1. Examples of various waveforms as displayed on an oscilloscope.

case, as the modules are internally wired together and are inseparable. Thus, the 901-A oscillator controller, the 901-B oscillator and the 901-C output stage are all parts of one oscillator and may not be separated. Note that only the left oscillator has an output stage; the right oscillator has none.

The function of the oscillator controller is to provide a voltage-controlled characteristic to a semiconductor oscillator which would normally be sensitive to changes in current rather than voltage. Signal connections between the oscillator controller and the oscillator are internally made. The function of the output stage is to provide an amplitude control, a switch selectable set of waveforms, and a pair of complementary outputs. Thus the output signals from the 901-C are identical to those from the 901-B with these exceptions.

The four waveforms made available are the sin wave, the square wave, the triangular wave, and the sawtooth wave. The square wave may be converted into a variable width pulse wave with the pulse-width control on the 901-A. FIGURE 1 shows various waveforms found in the synthesizer, as displayed on an oscilloscope. An oscilloscope is an ideal tool for presenting a visual picture of the characteristics of electronic music. The drawings illustrate various waveforms and illustrate the concepts of variable-width pulses.

OSCILLATOR TERMINOLOGY

Various names are often used for the component part of the different waveforms. When the complex but repetitive wave is analyzed by means of Fourier techniques, the results are a series of harmonically related frequencies called *harmonics*. The fundamental frequency (the lowest frequency) is the first harmonic. The sin wave contains only the fundamental, while the square wave and the triangular waves contain only odd-numbered harmonics (1, 3, 5, 7, 9, etc.) and the sawtooth wave contains both odd- and even-numbered harmonics.

The components of a wave that are present are called *partials*; thus, the second harmonic is the second partial of a triangular wave, but the third harmonic is the second partial of a square wave (because the second harmonic is absent). But partials do not have to be harmonic (in which case the wave is not periodic and cannot be analyzed by Fourier analysis). For example, the piano tone contains frequencies which are not harmonic; these are called partials but not harmonics. They are overtones, however, because they are generated by subdivisions of the same string. They are non-harmonic, due to string stiffness and the end effect, which makes the overtones higher

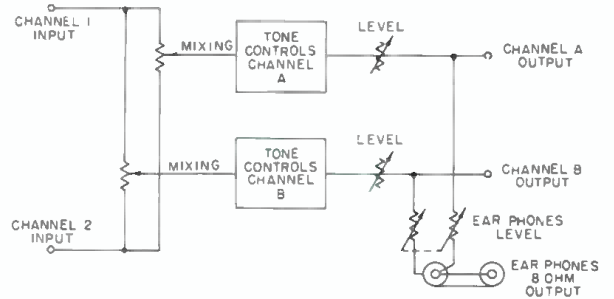


Figure 2. Block diagram of two-channel mixer in Moog synthesizer.

than true harmonics. For that reason, the piano cannot be synthesized by subtractive synthesis, but only by additive synthesis.

The three terms—partial, overtone, and harmonic—have different but related meanings, and their differences are worth noting. To sum up, any component of a complex sound is a partial. Partials having small whole number ratios are overtones, and partials generated by the same string or pipe are overtones (a generic term).

THE MIXERS

The Moog model 982 mixer is necessary for nearly all work done with the synthesizer. FIGURE 2 illustrates a block diagram of model 982. Note that the two input controls act as panners between the two inputs. The tone controls and level controls apply only to their particular channel marked A or B. Also, the earphone jacks are stereo and have inputs from both channels. That permits the synthesizer to be used as a self-contained instrument with a pair of earphones. The center of the tone controls (twelve o'clock) is the flat position.

Other types of mixers will be useful in electronic music. One of the most useful is the *panner*. The panner has special controls allowing one output to be reduced while another is increased. That may be used to produce the effect of moving sounds when the two outputs feed the two channels of a stereo sound system.

Simple mixers may be either "wet" or "dry," meaning powered or unpowered. Powered mixers may provide amplification and absolute independence of control of one channel from the others. They have no cross-coupling. Unpowered mixers may only provide a limited amount of isolation, and turning a control on one input will have some effect on the others. Unpowered mixers may provide only loss and no amplification. They are, however, inexpensive. The less expensive powered mixers may, in fact, be less desirable because they introduce noise or hum.

THE KEYBOARD-PITCH CONTROL

The Moog keyboard contains two types of control outputs, one operated by the keyboard and the other by the internally triggered envelope generators. Here we discuss the keyboard-controlled pitch voltage outputs.

This voltage output (actually two outputs in parallel, having exactly the same output signal) has a range of zero to 6 volts. Normally it is used to control the voltage-controlled oscillator but may control any voltage-controlled device with this voltage range.

The controls affecting this device are the *scale*, *range*, *hold* and *portamento*. These labels apply to the effect achieved when controlling the voltage-controlled oscillator and indicate the specific parameter of the sound thus

controlled. Thus, scale determines the scale produced; range, its tessitura; portamento, the connection between pitches; hold, the effect when all keys are released (with the switch on. The internal circuitry remembers the last key depressed and continues to produce that control voltage).

Of course, these controls have related effects when the pitch-control voltage is used to control, for example, the voltage-controlled amplifier. That is possible since all Moog modules have exactly the same control voltage range and are interchangeable in this respect.

By inserting a resistor, used as a voltage divider, between the output of the pitch-control section and the voltage-controlled module, the range may be reduced farther than the internal range control allows. When controlling the voltage-controlled oscillator, this permits "micro-tonal" scales and other unusual effects.

THE VOLTAGE-CONTROLLED AMPLIFIER

The Moog voltage-controlled amplifier is a singly balanced (control input only) modulator with a resemblance to the ring modulator to be described later. The difference is in the specific circuitry used to balance both inputs in the ring modulator.

Normal operation involves connecting the voltage-controlled amplifier to the envelope-control voltage output from the keyboard, thus using the voltage-controlled amplifier for envelope generation triggered by the keys on the keyboard. For this type of operation, the fixed-control voltage control on the amplifier is set to zero. The *exponential/linear* switch may be set either way, although an exponential curve duplicates the type of envelope produced by an acoustical instrument such as a piano. (Such an instrument seems to have a linear decay due to the compensation by the ear which has a logarithmic characteristic.) A *linear decay* is one of those sounds which

may be synthesized, but is never heard in nature. Thus it makes an interesting resource for original music.

The voltage-controlled amplifier may also be used as an amplitude modulator. In this type of arrangement, one signal feeds the signal input while the other feeds the control input. The amount of intermodulation can be controlled by the setting of the fixed-control voltage which sets the operating point on the amplifier's characteristic curve. The voltage-controlled amplifier, when used as an amplitude modulator, produces more harmonic distortion than a well-adjusted ring modulator and is, therefore, less desirable for live-concert modulation of voices and instruments than that of instruments alone.

THE KEYBOARD-ENVELOPE GENERATION

The basic Moog keyboard contains two envelope generators which are internally connected to the keys of the keyboard. Thus, every key triggers both envelope generators in an identical fashion.

Interconnections from the envelope generators is by means of two patch cords, one for each envelope generator. The output control voltages again have a range of zero to 6 volts. They may be used to control any of the Moog voltage-controlled units. Normal use is to connect them to the two voltage-controlled amplifiers for generation of actual envelope control. Thus the controls are labeled for this application. The four controls on either envelope generator are labeled *attack speed*, *attack height*, *decay time* and *sustain level*. When the generator is used to control an envelope with a voltage-controlled amplifier these are the actual parameters controlled.

Of course, as with other Moog voltage-controlling modules, the generator may be used to control the oscillator or the voltage-controlled filter as well. In these cases an analogous effect is produced by the controls, which may

Complete Audio Distortion and
Frequency Response
...Automatically



**RADIOMETER
COPENHAGEN** 

Comprehensive distortion and frequency response measurements are easily performed with the BKF10 Automatic Distortion Analyzer. This unique instrument combines a distortion meter, a low distortion audio sweep oscillator (<0.01% t.h.d.) and an input/output ratio meter. Operation is totally automatic... No balancing, nulling or level setting is required. Addition of a recorder provides complete distortion and frequency response curves. Send for complete information.



THE LONDON COMPANY / 811 SHARON DRIVE / CLEVELAND, OHIO 44145 / (216) 871-8900

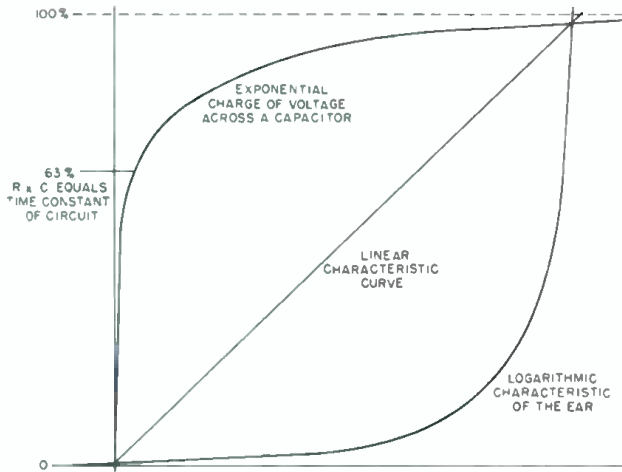


Figure 3. Graphic representation of exponential versus linear characteristic curve.

not be the exact effect described by the label of the control.

The larger Moog synthesizers also contain independent envelope generators with a somewhat wider variety of control. They have a continuously variable attack time rather than the two-position switch and they have a trigger input.

An interesting variation in envelope control is to drive one signal input of the vca with one envelope generator and the control input with another. The resulting envelope will be the difference between the two envelopes. This

technique may be used to produce very slow attack times on the simple envelope generator synthesizers.

THE FILTERS

Two types of filters are employed in the Moog synthesizers. These are fixed band-pass filters and variable voltage-controlled filters. The voltage-controlled filters are of two types, low-pass and high-pass. When used with an auxiliary coupler, the combination of a low-pass and a high-pass filter results in a voltage-controlled band-pass filter or a voltage-controlled notch filter, depending on how they are connected.

Fixed filters are usually supplied in banks which may be specified as quarter-octave, third-octave or half-octave, depending on the sharpness of the filter band characteristic. Narrower band filters require more units to cover the same total range. Third-octave filters require three per octave, half-octave filters two per octave, and so on.

Voltage-controlled filters are usually provided with a regeneration control which is used to regulate feedback around the filter. When turned up, the regeneration converts the filter into a resonant filter, similar to the acoustical formant filter. That is useful for musical coloration. Note that the resonance occurs at the point of maximum amplification or minimum filtering.

The Moog voltage-controlled filters have the same control voltage range as all the other Moog modules and may be controlled from all the common control devices. They may also be modulated, producing spectrum modulation.

THE BODE-MOOG RING MODULATOR

An instrument designed by Harald Bode and manufactured by the R. A. Moog Co. is the multiplier-type ring modulator with squelch. Producing a much lower distortion output than equivalent circuits set up on the Moog synthesizer, this unit is ideal for live performance and produces a particularly attractive and musical output. The inputs may be any combination of audio signals. If one of the two is a "live" acoustical instrument, and one an electronic sound source, attractive variants on the acoustical signal result. The technique is desirable for use in real-time electronic music performances.

The multiplier-type ring modulator generates very small amounts of harmonic and intermodulation distortion (other than the desired sum and difference). Thus, when two sin waveforms are presented to the two inputs, the output is also a pair of sin waves, the sum and the difference of the two inputs. Other ring modulators may generate harmonics of the modulation products as well as products of the harmonics of the input signals. These roughen the sound quality of the output and make it much less attractive to the listener.

The reader is referred to the *Electronic Music Review*, vol. 1, no. 1, for detailed discussion of techniques that may be performed with the ring modulator. Some of these techniques will be repeated here for convenience.

If the two signal inputs are complex waves, such as square or sawtooth waves, having an infinite series of partials, the resultants will be two infinite series of partials, one the sum series and the other formed by the difference.

If one input is a band of white noise, and the other a sin wave, the band of white noise will appear in the output but twice as wide, or in two segments formed by the sums and the differences, respectively. If the sin wave is made to sweep, the white noise in the output will also sweep, producing the effect of "howling wind."

Sounds picked up by a microphone may be ring-modulated with themselves if the overtones are filtered from one input and the entire spectrum is presented to the other input.

REMOTE BROADCASTING



REMOTE SITE CONSOLE

- Use standard telephone line
- Direct distance dialing
- Set up and check out in minutes
- High and low end frequency compensation with automatic level control option
- Lost line auto hang up option
Auto pick up on redial option
- Up to 6 microphone inputs with level control option, 4 headphone outputs with level control
- Output matched for standard telephone line or loop with level control, VU meter, built-in telephone line coupler and output for PA amplifier
- AC/DC with battery test meter
- Built-in telephone dial
- Options in addition to those noted include: carrying case, microphones, headsets, test tone generator, aux inputs, phono cartridge input and three pin connectors



STATION END CONSOLE

PULSE DYNAMICS MANUFACTURING CORP.
Box 355, Fulton & Depot Sts., Colchester, Ill. 62326
(309) 776-4544, 776-4575



Circle 28 on Reader Service Card

A NOTE ON THE BODE RING MODULATOR

Due to the advances of technology and more recent developments a new instrument has evolved from the Bode Ring Modulator, manufactured by Moog, referred to in this article. It is the Bode Frequency Shifter, which comes in a Bode version and as a Moog module. In contrast to the ring modulator, which changes two sine waves with the frequencies f_1 and f_2 into the combination of $f_1 + f_2$ and $f_1 - f_2$ at the output, the frequency shifter is capable of separately producing the sidebands $f_1 + f_2$ and $f_1 - f_2$ on two individual outputs. A mixer combines both sidebands for a third output. In the center position of the mixer control the signal of this output equals that of a ring modulator.

The ring modulator produces a particularly attractive tremolo effect when connected in the same manner as standard tremolo or vibrato on an amplitude modulator. If the unmodulated signal is reproduced through one loudspeaker and the modulated signal through another, the result is a sort of amplitude-phase modulation in space which is very attractive.

Any sound may be transposed (up and down simultaneously) by modulation by a sine wave. Up transposition is produced by the sum tones and down transposition by the difference tones.

The Bode-Moog ring modulator is also available in dual units for stereo operation and other techniques.

VOLTAGE-CONTROLLED SEQUENCER

The Moog sequencer is voltage-controlled and voltage-controlling. This means that it is useful only with voltage-controlled modules of the type normally supplied with the Moog synthesizers. The range of output voltages is 0-2, 0-4, or 0-8, selectable by a switch which provides a degree of control but also a slight incompatibility with the 0-6 volt range of the Moog modules.

The Moog sequencer is built from digital computer components and is based on a binary counter. For this reason it has eight stages (2^3). A three-level binary counter counts to eight and then resets and begins counting over again. This is the procedure used. The pulses actually counted come from a standard voltage-controlled oscillator. The repetition rate of these pulses may be controlled by varying the control voltage. Thus, the counting speed may be controlled.

The three-level counter is decoded using computer logic to produce one line out of eight with a signal on it. This signal line corresponds to the count on the counter (and the light on the panel). The signal line activates one of eight switches which applies the control voltage to the output. There are actually three switches per count, one for each of three outputs. Each output has a separate control for each of the eight counts. Other features include skip and stop switches, a switch to apply the third row of con-

trol voltages to the oscillator, and a series of input and output jacks for each count position. These allow any position to control or to be controlled by an external signal. ■

BIBLIOGRAPHY

Ehle, Robert C.; *Techniques for the Synthesis of Electronic Music*, in North Texas State University Electronic Music Composition Lab Manual, Denton, Texas 1966.

Howe, Hubert; *Buchla Electronic Music System User's Manual*, CBS Musical Instruments, Columbia Broadcasting System, Inc., 1300 E. Valencia, Fullerton, California 92631.

Mathews, Max V.; *The Technology of Computer Music*, The M.I.T. Press, Cambridge, Mass. 1969.

Moog, Robert A.; *Electronic Music Composition-Performance Equipment Catalog*, R. A. Moog Co., Trumansburg, N.Y. 14886.

Ibid; *Instruction Manuals for Synthesizers*, R. A. Moog Co., Trumansburg, N.Y. 14886 (supplied with synthesizer units).

Specifications on the Tonus (ARP) Synthesizer; Tonus (ARP), Inc., 45 Kenneth Street, Newton Highlands, Mass. 02161.

Specifications on the Buchla Synthesizer; CBS Musical Instruments, Columbia Broadcasting System, Inc., 1300 E. Valencia, Fullerton, California 92631.

Specifications on the Electro Comp Synthesizers; Electronic Music Laboratory, Inc., P.O. Box 1334, Hartford, Conn. 06101.

Specifications on the Moog Synthesizer. R. A. Moog Co., Trumansburg, N.Y. 14886.

Specifications on the Putney Synthesizer; Ionic Industries Incorporated, 128 James Street, Morristown, N.J. 07960.

Von Foerster, Heinz and James Beauchamp; *Music by Computer*, John Wiley and Sons, Inc., N.Y.

Electronic Music Review, Volume 1, number 1. Various authors. Discussions of applications of ring modulation.

take advantage

Don't settle for just any professional power amplifier. Take advantage of the BOSE 1800.

Advantages like high power, ruggedness, reliability, serviceability, LED power indicators, and a full 5-year warranty.

The 1800 gives performers the advantage by providing them with all the power they need to handle the dynamics of their music.

BOSE 1800 pro power amp: designed to be taken advantage of.

Please send information on the BOSE 1800 to

Name _____

Address _____

City/State/Zip _____

BOSE The Mountain Framingham MA 01701 (617) 879-7330 Dept DP

BOSE 1800



A Realistic View Of Electronic Music

Development of fully realized electronic music depends on mutual understanding between composers and technicians. A composer tells how to dissolve existing confusions.

IN A SENSE, all sounds emanating from a loudspeaker represent electronic music because they are the realization of electric currents projected through (or with) air by way of paper cone vibrations. More specifically, however, electronic music has come to mean those sounds which originate from audio oscillators or generators and are altered by processes of filtering, envelope construction, etc. This not-so-new art, dating back to Delaborde's *Electronic Harpsichord* in 1761, has suddenly (since about 1951) become a serious art form, a popular rock device, a profound contributor to the commercial music scene. Over 30 percent of TV commercials employ either complete or partial electronic sources, according to a study done by the author two years ago. It's also a guaranteed Pavlov scare technique in the motion picture industry (current example being *The Exorcist*).

We are not concerned here with the history, aesthetics or current uses of electronic music, but rather, the distinctly unique problems of the interdisciplinary synthesis of music and science. In a recent interview with Pierre Boulez, conductor of the New York Philharmonic Orchestra, I became more acutely aware of these problems. Boulez offered the following observations:

"I think that you cannot do good work in this area until

you have teams working together. You must have composers and technicians alike. Four things, really: composer, technician, good equipment and a company or factory with money to back the operation as well as performers in some cases, and as long as these elements cannot work together you will have small laboratories without any outstanding results."

The many problems become magnified when trying to teach *electronic* music to musicians and/or *electronic music* to scientists. Synthesizers such as that shown in FIG. 1 are typical of manufacturers' attempts at making sound synthesis a possibility for one "Renaissance" man to create a great work of art. Piano-type keyboards abound (and with them the ten-finger limitations of piano music which electronic music is, or should be, able to avoid). Frequency switches containing reference points in organ stop lengths (8 ft., 4 ft., etc. rather than Hz) are at every oscillator; numerous other musical reference points no more than hint at the ultimate use of the equipment.

On the other hand, a host of oscilloscope functions, digital sequencers, sample hold techniques and waveform indicators contrast the musical terminology with often highly technical and strangely abbreviated scientific jargon. To say the least, teaching the synthesizer and its manifold functions to any group of specialists requires a remarkable blend of vocabularies, leaving most students with the impression that only a madman would attempt an honest association with this combination of gear and gadgetry.

To date, most of the writing about this subject has been in music journals or textbooks edging around electronics, acoustics, and engineering with variable amounts of success. The composers, teachers and serious practitioners of

David Cope is a distinguished composer whose works have been performed by major orchestras. He is at present resident composer and director of the Electronic Music Laboratory of Miami University, in Oxford, Ohio.

electronic music have had to be content to subscribe to music journals as well as journals such as *db* and others in the scientific fields of acoustics, electronics and physics. The intent here is to acquaint the sound engineer with the incredible problems the serious composer of electronic music faces. By doing so, we hope that more literature will appear offering solutions to some of these problems.

UNFAMILIAR GROUND

Through necessity, the composer must search an initially unknown subject, electronics, to gain even a bare insight into his raw material (the instrument). And the electronics engineer must grope through the more personal, yet still highly technical skills of unfamiliar musical material. For the most part, as Boulez has pointed out, neither combination has yet produced outstanding results.

Going ahead in one's own speciality without anything but a bare knowledge of the other fields involved has sometimes proved fatal in the end result. We find the creative process so ego-demanding that, as Stockhausen has remarked, "It is necessary to constantly switch personnel so as not to invoke daily fistfights." Half the time, the specialist is attempting solutions without knowing the problems encountered in the other discipline. (A complete studio was once destroyed by a composer turning all pots on full to hear his sound, unaware that his product was sub-audio).

One can easily uncover a problem and call for an answer. Proposing a concrete solution is another matter. After having worked in electronic studios for over seven years and taught college courses for a number of years, I've come up with a set of priorities possibly of value to the sound engineer, most certainly of value to the electronic music composer. My priorities are not complete, they are merely my own viewpoint. Hopefully, they will create a possible bridge between one art, music—and a series of sciences.

POINTS OF INTEREST AND/OR CONFUSION

- Relationships between audible non-linear sideband production and combinational tones (cochlea produced).
- Construction and possible standardization of waveform identities other than sine, rectangular, sawtooth, staircase, and triangle.
- Standardization substitutes for the now confused plug and connector systems (phone, phono, cannon, etc.).
- Details of acoustical placement of speakers (angle toward ceiling, etc.).
- True "balanced line" properties and priority when connecting one unit to another.
- Importance of speaker enclosures and possible reconstruction of available units for better responses in variable circumstances.
- A third possibility of pot control besides vernier and slide, that presents viable clean operation during recording or playback.

These represent but a few current problems. A sound engineer's glance through Allen Strange's *Electronic Music* (Wm. C. Brown Co., 1972), Gilbert Trythall's *Principles and Practices of Electronic Music* (Grosset & Dunlap, 1974) and others—including my own *New Directions in Music* (Wm. C. Brown 1971)—will give him an insight into many other existing problems. Although these books might not have solutions to some of the engineer's questions, one must keep in mind that electronic music, taken seriously only since 1951, is still a baby art. No books nearing the above quality were available within 25 years of the development of the violin!

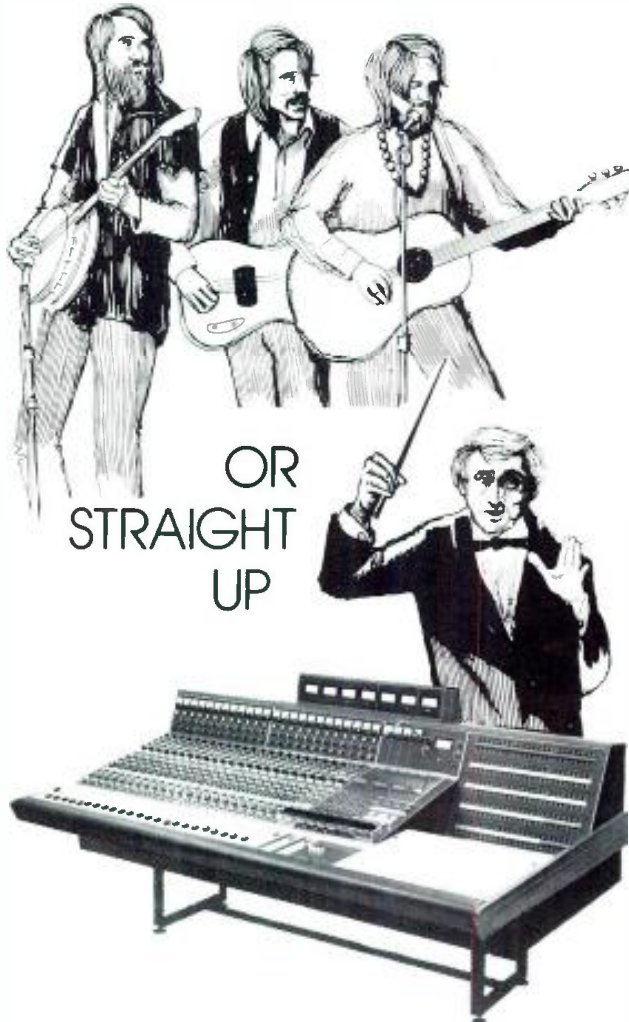
DEMANDS OF EVER-NEW TECHNOLOGY

Possibly the most significant challenge facing the electronic music composer, as well as the sound engineer, is

Neve

THE QUALITY MIXER

ON THE ROCKS



NEVE ANNOUNCES THE NEW 8024 CONSOLE. Where else can you get a 24 track recording and do simultaneous quad, stereo and mono mix downs?

This 24 track console provides all the flexibility one can imagine within the astonishing length 80.5 inches.

LOOK AT THE FEATURES — 24 In/24 Out • Overdub • 24 Track Monitoring • Full EQ on Every Channel • Simultaneous Quad, Stereo and Mono Mixers • Quad Positioning on Each Channel • And for Added Flexibility There are 240 Jacks.

Of course, the Neve quality is built into this console which is delivered with its own handbook, spares kit, and all mating XLR connectors, and you will be amazed at the low price. Couple this with the now famous Neve Service and you again have a winning combination. CALL US —

Rupert Neve Incorporated, Berkshire Industrial Park,
Bethel, Connecticut 06801 Tel: (203) 744-6230, Telex: 969638
Rupert Neve Incorporated, Suite 616,
1800 N. Highland Ave., Hollywood, California 90028 Tel: (213) 465-4822
Rupert Neve of Canada, Ltd., 2717 Rena Road,
Malton, Ontario L4T 3K1, Canada Tel: (416) 677-6611
Rupert Neve & Company Ltd., Cambridge House,
Melbourn, Royston, Hertfordshire, SG8 6AU England, Tel: (0763) 60776
Rupert Neve GmbH, 6100 Darmstadt Bismarckstrasse
114 West Germany, Tel: (06151) 81764

Circle 29 on Reader Service Card

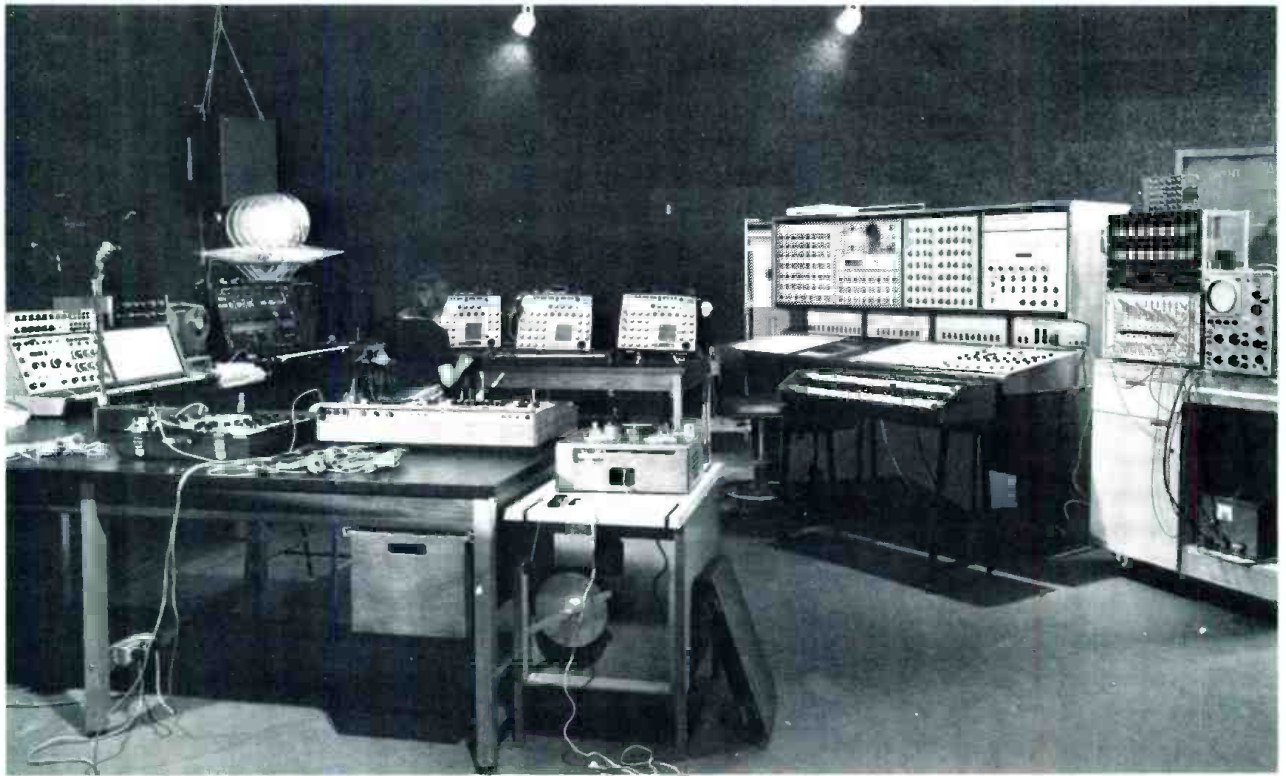


Figure 1. A sophisticated setup for the interpretation of electronic music.

that of progress. No sooner has one spent his entire budget on what was the best available equipment than another, more advanced, synthesizer or module appears. The composer can treat that in one of two ways. He can forget it—music is music—and opt out of the expense of valuable time learning to use the equipment as well as the money spent. Or, he can buy the equipment, learn to use it, and usually find that something else yet more advanced is now being produced.

A good friend who is currently a director of a computer music studio recently wrote to me: "David, after five years I have finally arrived at a complete D/A interface for our IBM 7090, only to discover that I have forgotten what it was I was going to do with it." To compound the problem, it was recently learned that the computer time was taken away due to business and science priorities.

Problems and confusions continue. With the advent of light pen writing on CRT inputs for computers, as well as the possibility of computers actually reading music for direct analog playback (and voice activation of quick alterations), the endless study of voltage controlled synthesizers may have been a wasted one—at least for the composer.

COOPERATION A NECESSITY

There is, however, a light at the end of the tunnel when the composer finally realizes that he has worked with "performers" for years, whether technical or musical, equally respected for their craft in their own rights. Their relationships may not have been smooth. But it may become apparent that the sound engineer, who takes delight in discovering and purchasing new equipment, and the composer, concerned with artistry, can more than co-exist. As a flexible unit, they can produce works of music far beyond our current vocabularies.

These two-three man groups would need three vital properties: a common vocabulary for communication, constant role identification in the creative act, and patience.

Another matter is becoming more and more clear. Instead of the keeping-up-with-the-Jones's attitude of our colleges (major creators of electronic labs around the country), we need to funnel these monies into two or three large, centrally located laboratories. These labs then will become the centers for research in sound engineering and for composer creativity.

INSTITUTE OF SONOLOGY

Such a center exists at the Institute of Sonology, Utrecht State University, the Netherlands. This lab is equipped with four complete studios (including computers, synthesizers of all types, and ten professional tape recorders). It employs six scientific staff members, four technical staff members, and two secretaries. The results are represented on every major record label in the world and speak for themselves. More than once, an American university has lost a gifted student to this incredible environment.

My electronic music is listed on two record labels, Discant and Orion, and represents what I hope are crafted and inspiring compositions. They are, however, far less than highly sophisticated in terms of sound engineering, and future works will necessarily remain so. It takes years for sound engineers to fully comprehend, in terms of their own craft, the nuances of interpretation necessary for a true partnership of the technical and musical possibilities. If sound centers became a reality, the opportunity would be present for the closer sharing of the creative processes.

When the disciplines of music and technology finally erode their differences, we will come, as Varèse says, . . . "to the liberation of sound." ■

Closing date is the fifteenth of the second month preceding the date of issue.

Send copy to: Classified Ad Dept.

db THE SOUND ENGINEERING MAGAZINE

1120 Old Country Road, Plainview, New York 11803

Rates are 50¢ a word for commercial advertisements.

Employment offered or wanted ads are accepted at 25¢ per word.

Frequency discounts: 3 times, 10%; 6 times, 20%; 12 times, 33%.

TUNED ROCK P.A.s. Customized high intensity touring/permanent installation sound systems, including narrow band (5Hz!) feedback suppression, detailed regenerative response Acousta-Voicing/environmental equalization (± 1 dB at your ears), room design / measurement / treatment $\leq 15\%$ articulation loss of consonants; **1000s** of customized professional products, including fiberglass horns, consoles, comp/rms/peak limiters, 18 dB continuously variable electronic crossovers, digital/acoustic delays, omnipressors, flangers, reverb, echo, doubling/tripling effects, P.A. noise reduction; piezo transducers; frequency shifters from J.B.L./Altec pro, Tascam, U.R.E.I., Eventide, Gately, Studer, Beyer, Crown, Community, Mom's Audio, McIntosh, Bozak, Allen & Heath, Gauss, Cetec, Electrodyne, Multi-Track, Parasound, White, etc. All shipped prepaid/insured. **Music & Sound, Ltd., 11½ Old York Rd., Willow Grove, Pa. 19090. (215) 659-9251.**

Inventors/Engineers

FOR SALE

MODERN RECORDING TECHNIQUES by Robert E. Runstein. The only book covering all aspects of multi-track pop music recording from microphones through disc cutting. For engineers, producers, and musicians, \$9.95 prepaid. To Robert E. Runstein, 44 Dinesmore Ave., No. 610, Framingham, Ma. 01701.

WANT TO GO BI-AMP?

DeCoursey Electronic Dividing Networks are available from \$89.10 (monaural bi-amp) to \$205.00 (stereo tri-amp). Price includes plug-in Butterworth filters; 6, 12, or 18 dB per octave at any desired cutoff frequency. **DeCoursey Engineering Laboratory, 11828 W. Jefferson Blvd., Culver City, Ca. 90230.**

DESIGN, INSTALLATION and maintenance for recording studios and sound reinforcement systems. **George J. Kereji, 433 Berwyn St., Dearborn Heights, Michigan 48127. (313) 274-1476.**

NEW YORK'S LEADING PRO AUDIO/VIDEO DISTRIBUTOR for audio, video, broadcast, public address, and hi-fi systems; representing over 130 audio/video manufacturers, featuring such names as Ampeg, Scully, Tascam, Sony, J. B. Lansing, Neumann, Altec, McIntosh, AKG, Dynair, T.V. Microtime, UREI, 3M, and other major brands; the largest "in stock" inventory of equipment, accessories, and parts; competitive discount prices; factory authorized sales, service, parts, systems design, installation. Write for free catalog! **Martin Audio/Video Corporation, 320 W. 46th St., New York, N.Y. 10036. (212) 541-5900.**

STUDIO SOUND—Europe's leading professional magazine. Back issues available from June, '73. \$1 each, postpaid. **3P Recording, P.O. 99569, San Francisco, Ca. 94109.**

AMPEX SPARE PARTS; technical support; updating kits, for discontinued professional audio models; available from VIF International, Box 1555, Mountain View, Ca. 94042. (408) 739-9740.

RENT AN 8-TRACK SCULLY by the day/week. Contact F. Rubin, (212) 631-5919.

LEBOW LABS, INC., 56 Chestnut Hill Ave., Boston Mass. 02135. New England's foremost pro audio/video distributor, representing over 100 major manufacturers. Sales, consulting, design, and service by expert staff. Broadcasting, industrial, educational, and recording installations. **Frank Petrella, (617) 337-6303, (617) 782-0600.**

\$2 MILLION USED RECORDING EQUIPMENT. Send \$1.00 for list, refundable, to **The Equipment Locator, P.O. Box 99569, San Francisco, Ca. 94109. 94109.**

DIRECT BOX, 50k; 150 ohm transformer; 20 kHz ± 1 dB; XLR phone-type connectors; ground switch. \$42.50. Gately Electronics, 57 W. Hillcrest Ave., Haverstown, Pa. 19083. (215) 449-6400.

CASSETTE LABELS, blank and custom printed. Free samples. **Tarzac, 638 Muskogee Ave., Norfolk, Va. 23509.**

DYMA builds custom studio consoles, desks, enclosures, studio furniture. **Dyma Engineering, Route 1, Box 51, Taos, New Mexico 87571.**

TASCAM REVERBS—\$500; Tascam mixing consoles—\$2,350; Tascam ½-inch recorders; \$1,990; Tascam 8-track recorders—\$3,490. All shipped prepaid/insured, including free alignment/equalization/bias/calibration. **Music & Sound, Ltd., 11½ Old York Rd., Willow Grove, Pa. 19090. (215) 659-9251.**

→ Note Special Prices ←

SPLICE TAPE FASTER, BETTER, BY SHEARING. Experts recommend Nagy splicers. Quality long-lasting instrument. Reasonably priced. Details, **NRPD, Box 289, McLean, Va. 22101.**

KING MODEL 800S TAPE WINDER (hub); pre-recorded tape winder, will wind either ¼ in. or 150 mil. widths; as new condition. Also used Rangertone resolver, as is. **Gary E. Taylor, Continental Film Productions Corp., P.O. Box 6543, Chattanooga, Tenn. 37408.**

DYMA builds roll-around consoles for any reel-to-reel tape recorder. **Dymo Engineering, Route 1, Box 51, Taos, New Mexico 87571.**

DYNACO RACK MOUNTS for all Dynaco preamps, tuners, integrated amps. \$24.95 postpaid in U.S., \$22.50 in lots of three. **Audio by Zimet, 1038 Northern Blvd., Roslyn, N.Y. 11576. (516) 621-0138.**

(continued)

FOR SALE

AUDIO PRO CLEANER

The sensational new cleaner that eats up studio grime, makes your equipment look like new, cleans heads, tape guides, capstans . . . and everything else in the studio. Send \$11.95 for one gallon plus 8 oz. sprayer post paid to:

AUDIOTECHNIQUES, INC.
142 Hamilton Ave.
Stamford, Conn. 06902
(203) 359-2312

PROFESSIONAL CASSETTE DUPLICATION, any length, stereo or mono., any master acceptable. Dolby. **Cantor Productions, 26 W. Nottingham Rd., Dayton, Ohio 45405. (513) 6571.**

WHATEVER YOUR EQUIPMENT NEEDS—new or used—check us first. We specialize in broadcast equipment. Send \$1.00 for our complete listings. **Broadcast Equipment & Supply Co., Box 3141, Bristol, Tenn. 37620.**

NEW & USED 1/2-in. recording tape on metal reels. New Ampex 1 1/2 mil 2500' \$7.75 each; 1 mil, \$8.25 each; used Scotch, 206, \$7.00 each; new and reconditioned metal reels, (all sizes). **Soundd Investment, P.O.B. 88338, Atlanta, Ga. 30338.**

DISCOTHEQUE MIXERS from \$325.00; equalizer speakers with built-in power amplifiers; bi-amped systems and complete portable discotheque systems. Write us for literature. Dealer inquiries invited. **GLI, Box 2076, Dept. D, Brooklyn, N.Y. 11202. (212) 875-6992.**

AVAILABLE SERVICES. Milam Audio Co. specializes in every phase of professional studio wiring, from complete systems to individual pre-wired parts and components. Available from stock: patch bays, custom mic panels, multi-paired cabling and harnesses, etc. **Milam Audio Co., 700 W. Main St., So. Pekin, Ill. 61564. (309) 348-3112, 9605.**

MULTI-TRACK

- ★ SERIES "B" MIXING CONSOLE
- ★ VARI-BAND 5 SECTION PARAMETRIC EQUALIZER
- ★ DUAL EQUALIZED REVERB
- ★ LONG & SHORT THROW SLIDE FADERS
- ★ HIGH BALLISTIC VU METER

P.O. BOX 3187
HOLLYWOOD, CA 90028
(213) 467-7890

FREE CATALOG & AUDIO APPLICATIONS



CONSOLES
KITS & WIRED
AMPLIFIERS
MIC. EQ ACN.
LINE TAPE, DISC,
POWER
OSCILLATORS
AUDIO
TAPE BIAS
POWER SUPPLIES

OPAMP LABS, INC.
1029 N. SYCAMORE AVE.
LOS ANGELES CALIF 90038
(713) 934-3566

BODE FREQUENCY SHIFTERS since 1963 . . . Advanced designs for electronic music studios and high quality P.A. systems. New real time performance, synthesizer compatible model (patented features): \$995.00. Anti-feedback and special effects model with variable frequency shifts, down to 0.5 Hz.: \$575.00. Prices f.o.b. North Tonawanda. Delivery: stock to 6 weeks. For details and information on other models, write to: **Bode Sound Co., Harald Bode, 1344 Abington Place, N. Tonawanda, N.Y. 14120. (716) 692-1670.**

FOR SALE: 3M 8-TRACK recorder, series 400, excellent specs, excellent condition. Going 16-track. \$7,000. **NWI Studios, 011 S.W. Hooker, Portland, Oregon 97201. (503) 224-3456.**

MCI . . . DOLBY. Two great names! Two great products! For authorized factory representation in the progressive Midwest, contact: **Jerry Milam, Milam Audio Co., 700 W. Main St., So. Pekin, Ill. 61564. (309) 348-3112, 9605.**

CUSTOM CROSSOVER NETWORKS to your specifications; a few or production quantities. Power capacities to thousands of watts; inductors and capacitors available separately; specify your needs for rapid quotation. Also, **PIEZO ELECTRIC TWEETERS**—send for data sheet and price schedules. **TSR ENGINEERING, 5146 W. Imperial, Los Angeles, Ca. 90045. (213) 776-6057.**

DISKO MIX-MASTER I for disco use and/or preparation of disco tapes. Mixes two stereo phono inputs with self-contained headphone cueing amplifier. Send for literature. \$129.00. Dealer inquiries invited. **Berkshire Audio Products, P.O. Box 35, Great Neck, N.Y. 11021.**

A FEW competitively priced used Revox A77 decks available. Completely reconditioned by Revox, virtually indistinguishable from new and have the standard Revox 90-day warranty for rebuilt machines. Satisfaction guaranteed. Example, A77 with Dolby, \$675, plus shipping. Write requirements to **ESSI, Box 854, Hicksville, N.Y. 11802. (516) 921-2620.**

THE LIBRARY . . . Sound effects recorded in STEREO using Dolby™ throughout. Over 350 effects on ten discs, \$150.00. Write, **The Library, P.O. Box 18145, Denver, Colorado 80218.**

AUDIO DESIGNS CONSOLE. Components: Ten 700, six 770 modules and supply. Best offer. **55i. (716) 695-3500.**

AKG, ADVICE, Audio Research, Beyer, Crown, dbx, Infinity, Integrity, Koss, Maxell, Nakamichi, Phase Linear, PML, Revox, SAE, Scotch, Sennheiser, Service, Shure, Sony, Stanton, Stax, TDK, Tascam, Technics, Thorens, etc. Hi-Fi Haven, Inc. 28 Easton Ave., New Brunswick, N.J. 08901. (201) 249-5130.

FOR SALE: AUDITRONICS CONSOLE; 24-in/24-out; full quad; quad reverb with two API joy sticks; built-in stereo radio speakers; two producers' desks; used nine months; will include 16 ITI parametric equalizers (brand new). Total original cost of this package: \$37,720—your price: \$27,000! (If you want only 18 inputs, the total cost will be \$24,000.) Will separate and will finance. Contact **Paul. (312) 225-2110, Chicago.**

NEUMANN DEALER has demonstrator to sell with full warranty: model U-87 with accessories. \$500.00. **The Audio Marketplace, Div. U.A.R., 5310 Jackwood, San Antonio, Texas. (512) 684-4000.**

SCULLY, ELECTRO-VOICE, NEUMANN, Shure, Spectrasonics, Quad Eight, Masterroom, ARP, Pultec, Microtrak, Russco, dbx, Interface, EMT, and others. The Audio Marketplace, Div. United Audio Recording, 5310 Jackwood, San Antonio, Texas 78238. (512) 684-4000.

ORTOFON

DYNAMIC MOTIONAL FEEDBACK mono disc cutting systems. Complete with drive, feedback, and feedback-playback monitor amplifiers and cutterhead. All systems guaranteed. Spare cutterheads available for exchange/repair. **Albert B. Grundy, 64 University Place, New York, N.Y. 10003. (212) 929-8364.**

B.B.C. REFERENCE MONITORS, PRE-EQUALIZED J.B.L./Altec monitors; Dahlquist phased arrays; I.M.F. transmission lines; Infinity electrostatics; Crown/McIntosh 16Ω/bridged bi-amps; Scully/Revox A-700 recorders; Micmix/Parasound/Multi-Track reverbs; Eventide flangers/omnipressors; Lexicon digital delays; dbx/Burwen N.R. companders; Little Dipper hum/buzz notch filters; Cooper Time Cube echo send; moving coil Denon/Ortofon; B&O/Rabco straight line arms/cartridges; Studer/AKG/Sennheiser condensers; Beyer ribbons, U.R.E.I. comp/limiters/crossovers; Gately pro-kits; Q.R.K. turntables; White equalizers; 1000s more. **Music & Sound, Ltd., 11 1/2 Old York Rd., Willow Grove, Pa. 19090. (215) 659-9251.**

→ All Shipped Prepaid + Insured ←

MCI . . . Now the best selling multi-track recorder!

MCI . . . only from Audiotechniques, Inc. in the great Northeast!

Tape recorders from one track to 24-track.

Recording consoles up to 40 input

MCI sales-service
factory trained technicians
Studio design and
construction service

AUDIOTECHNIQUES, INC.
142 Hamilton Avenue
Stamford, Conn. 06902
(203) 359-2312

AMPEX CAPSTAN MOTORS. Factory replacement for model 300 or 3200 duplicators, 1800/3600 rpm, \$140.00 xchange. **Tellet Communications, 8831 Sunset Blvd. W., Hollywood, Ca. 90069. (213) 652-8100.**

USED: GATELY SPM-6 (plus) \$650; B&K 1470 oscilloscope (plus) \$400; Soundcraftsman 2012, \$200; Advent 100A, case, \$180; Shure SM-54 (plus) \$110. SM-50, \$50; (2) Sony ECM-22p, \$70; (3) direct boxes, \$20. (218) 728-2695.

AMPEX, SCULLY, TASCAM, all major professional audio lines. Top dollar trade-ins. 15 minutes George Washington Bridge. **PROFESSIONAL AUDIO VIDEO CORPORATION, 342 Main St., Paterson, N.J. 07505. (201) 523-3333.**

LOWEST PRICES IN THE COUNTRY on microphones, power amps, speakers, musical instruments, P.A. equipment, including Peavey, Heil, J.B.L.; huge stock, top brands only. **Gracin's 110, 606 Rte. 110, Huntington, N.Y. 11746. (516) 549-5155.**

RECORD/PLAY ELECTRONICS. new Langevin mono solid-state, \$250 each; also matching heads. GE torque motors, \$40. Special price for lot. Discontinuing this product. Contact **Dave or Wally, Tapeathon, Box 814, Inglewood, Ca. 90301 (213) 776-6933.**

ONE WAY NOISE REDUCTION for cutting rooms/tape copies; retains highs, rids hiss/surface noise & clicks/pops by a full 10-14 dB and costs \$170 up per channel! **Music & Sound, Ltd., 11½ Old York Rd., Willow Grove, Pa. 19090. (215) 659-9251.**

REPAIR

SCHOEPS (TELEFUNKEN) VACUUM TUBE CONDENSER MICROPHONES REPAIRED. Original factory parts & factory calibration of capsules. Models CM51, 61, 66; M201, 221, MK24, 26 etc.

ALBERT B. GRUNDY
64 University Pl., N.Y., N.Y. 10003
(212) 929-8364

**ONE STOP
FOR ALL YOUR PROFESSIONAL
AUDIO REQUIREMENTS
BOTTOM LINE ORIENTED
F. T. C. BREWER CO.
P.O. Box 8057, Pensacola, Fla. 32505**

NEW MODELS: Ampex AG440C 2-track, servo capstan motor; Scully 280B; used AG440Bs; used Scully 280, 8-track, new heads, in console, excellent condition; Sennheiser mics. Immediate delivery from stock. **Malaco Recording, Jackson, Miss. (601) 982-4522.**

PERFORM REAL TIME AUDIO ANALYSIS with your oscilloscope! Just add the new ARA-412 Acoustic Response Analyzer—\$1,295.00. Write for free data sheet: **Communications Company, Inc., 3490 Noell St., San Diego, Ca. 92110.**

MONITOR EQUALIZERS for your Altecs & J.B.L.s are a steal at \$75/channel

+
FREE ROOM EQUALIZATION with purchase of ½ octave filters. This is not a misprint. **Music & Sound, Ltd., 11½ Old York Rd., Willow Grove, Pa. 19090. (215) 659-9251.**
→ S.M.E. Damping Mods—\$30.00 ←

HARMONIC PERCUSSION for any Hammond organ. Easy to install. **Linear Devices, Dept. 3, Box 5750, San Francisco, Ca. 94101.**

AMPEX SERVICE COMPANY: Complete factory service for Ampex equipment; professional audio; one-inch helical scan video; video closed circuit cameras; video systems; instrumentation and consumer audio. Service available at **2609 Greenleaf Avenue, Elk Grove Village, Ill. 60007; 500 Rodier Dr., Glendale, Ca. 91201; 75 Commerce Way, Hackensack, N.J. 07601.**

SOUND 80 IS REPLACING all ¼" machines with new MCIs. We have Scully 280s: Three mono full-tracks; one 4/2 playback; one transfer master with preview head and electronics. Two Ampex 300 transports with Inovonics electronics and new heads. All machines are console-mounted and in mint condition. Two Pandora time lines, like new; one Roger Mayer RM-58 limiter; two dbx noise reduction cards; one Dolby M-16; two Countryman 968 phase shifters. **Sound 80, Inc., 2709 25th St., Minneapolis, Mn. 55406. (612) 721-6341.**

ACTIVE BUTTERWORTH FILTERS for electronic crossovers: 4 poles, highpass or lowpass, 24 dB per octave rolloff, 1½ x 2 inches, \$14.95; 8 poles, lowpass, 48 dB per octave rolloff, 2 x 3 inches, \$19.95. Specify cutoff frequency 500 Hz to 20,000 Hz. **FREE catalog. (601) 323-5869. MFJ Enterprises, Box 494, Mississippi State, Ms. 39762.**

AUTOMATED QUAD PANNING

THE UNIQUE AQC SYSTEM (PAT. APPLIED FOR)
CAN DO WHAT HANDS CANNOT
4, 8, 16 & 24 INPUTS
VIDEO & AUDIO ARTISTRY CORP.
p.o. box 4571, boulder, colorado 80302
(303) 499-2001

WANTED

WANTED: B & O Stereo microphone, model BM-5. **Box 81, db Magazine, 1120 Old Country Rd., Plainview, N.Y. 11803.**

WANTED: Educational public broadcast station needs surplus studio equipment, particularly magnetic tape and mixing equipment. Contact **Boulder Community Broadcast Association, 885 Arapahoe, Boulder, Colorado 80302.**

EMPLOYMENT

SALES MANAGER. We are looking for an aggressive sales manager to sell our complete line of console components for recording, broadcast, and sound reinforcement. Individual must be an experienced pro with a proven performance record. National distribution. **Modular Audio Products, 1385 Lakeland Ave., Bohemia, N.Y. 11716. (516) 567-9620.**



WORAM AUDIO ASSOCIATES

Consultants in Studio Systems
Engineering, Design and Installation

—offering—

**A COMPLETE CONSULTATION
SERVICE FOR STUDIO
PLANNING AND
CONSTRUCTION**

**FREE-LANCE RECORDING
SERVICE IN THE
NEW YORK AREA**

**212 673-9110
64 University Place
New York, N.Y. 10003**

- Of interest to those in or servicing the music industry, **International Mus-expo '75** will take place on September 21-24 at the Las Vegas Convention Center. The exhibition will feature firms from the United States and Europe, including the communist countries. Russia will be represented by Mezhnkiga, the official agency that imports and exports recordings, sheet music, and books. The exhibit will display wares from recording companies, studios, and audio accessory manufacturers. **Roddy S. Shashoua** is focalizing the exhibit. The address of MUSEXPO is 1350 Avenue of the Americas, N.Y.C. 10019. Telephone number is (212) 489-9245.

- **Thee Studio**, of Claremont, Ca, now boass a new 16-track recording-mixdown facility, built by **Everything Audio**. The studio is equipped with the Spectra-Sonics 1024 console, 24-in/24-out, an MCI 16-track machine, and Dolby noise reduction. The monitors are JBL 4341s powered by Crown amplifiers. The studio is located at 224 N. Indian Hill Blvd.

- **John Pritchett** has been appointed to the post of president of **Quantum Audio Labs, Inc.** of Glendale, Ca. Mr. Pritchett, a public address technician, recording engineer, and designer, comes to Quantum from the James E. Lansing Company. He has also been associated with Altec.

- Recording, mixing, and editing from 16 tracks down to mono will be offered by **Studio 21**, new recording facility located at 635 Madison Avenue, New York City. The studio has high speed duplication facilities, sound

SPECIAL: dB BINDERS

This handsome vinyl binder will hold an entire year's issues of **db** The Sound Engineering Magazine. It makes an easy-to-handle reference guide and only requires a minimum of space in your office or on your bookshelf. A limited supply is available at \$5.95 each on a first-request basis.

db Magazine, 1120 Old Country Rd.
Plainview, N.Y. 11803

Here's my \$5.95. Send me a binder.

Name _____

Address _____



LEON A. WORTMAN

effects libraries, spectator seating, office facilities, and shipping service. Musical instruments are available free of charge. **George Agoglia** is director of operations.

- **L.A.W. Associates**, providing specialized marketing and sales consultant services to audio and closed circuit television firms, has been formed by **Leon A. Wortman**. The new firm's office is located at 743 Holly Oak Drive, Palo Alto, California. Mr. Wortman, who was formerly with the **Ampex Corporation**, is the author of the **CCTV Handbook**.

- **University of Wisconsin, Madison, Wisc.**, will host a three-day Sound Engineering seminar September 3-5. The seminar, conducted by **Don Davis**, will cover the following: Design of a biamped system; use of digital time delay; where to place loudspeakers; filter sets; altering loudspeaker coverage patterns; acoustic levels and electrical power; design and placement. To enroll, contact: **Lowell B. Jackson**, Dept. of Engineering, University of Wisconsin-Extension, 432 N. Lake St., Madison, Wisc. 53706.

- A radical saving of power, to the tune of 400 million watts, through the use of switching power supplies in place of linear regulators, is possible, according to findings published by **Darling & Alsobrook** as part of a four volume International Electronic Packaging series. According to **Dr. John Salzer**, vice president of the Los Angeles management consulting firm, "The cost of a switching power supply can be ten to as much as fifty percent higher than that of a linear regulator type, but the overall cost of the system incorporating a switching power sup-

- Pioneer **General Electric Company** engineer, **Dr. Ernst F. W. Alexanderson**, died on May 14 at the age of 97. Dr. Alexanderson, an associate of **Steinmetz** and **Marconi**, received a total of 322 patents during his 46-year career with GE. His most significant contribution was a high-frequency alternator, one of the seed inventions that led to the development of modern radio. Previous to the invention of the alternator, only dots and dashes could be transmitted by wireless. Wireless operators on ships on historic Christmas Eve, 1906 were astounded to hear voices coming over the wires. They were hearing Dr. Alexanderson's alternator in action, and the birth of radio. In addition to the alternator, Dr. Alexanderson developed the magnetic amplifier, the electronic amplifier, the multiple tuned antenna, the anti-static receiving antenna, and the directional transmitting antenna. He also devised radio altimeters, and his studies in the polarization of radio waves made possible effective radio direction finders. He was instrumental in the development of shortwave uses and television.

ply is less because the supply dissipates less heat and thus requires less cooling." Dr. Salzer also pointed out that at higher ratings, switching power supplies will still dissipate an acceptable level of heat, in contrast to linear regulators, which are seldom used at the 300-watt level or above. Other advantages are compactness and simplicity of support and mounting. Although there has been resistance to power switching because of the expense and natural suspicion of new techniques, the study indicated continued growth in this area, projecting from two percent in 1973 to thirty percent by 1978.

- **Jack Valenti**, president of the **Motion Picture Association of America** and Special Assistant to the President of the United States during the period 1963-66, will be the guest speaker at the get-together luncheon of the **SMPTE** conference scheduled for September 28-October 3, at the Century Plaza Hotel in Los Angeles.

JBL MODEL 4315 STUDIO MONITOR

JBL Professional Series
Model 4315 10001

JBL's new 4315.
There's never been a wider range
studio monitor. Of any size.

And, four more things:

It's a four way system. It has the most sophisticated cross-over network ever designed. It's compact, shallow, portable. Perfect for wall mounting, horizontally or vertically. It's yours for \$714.

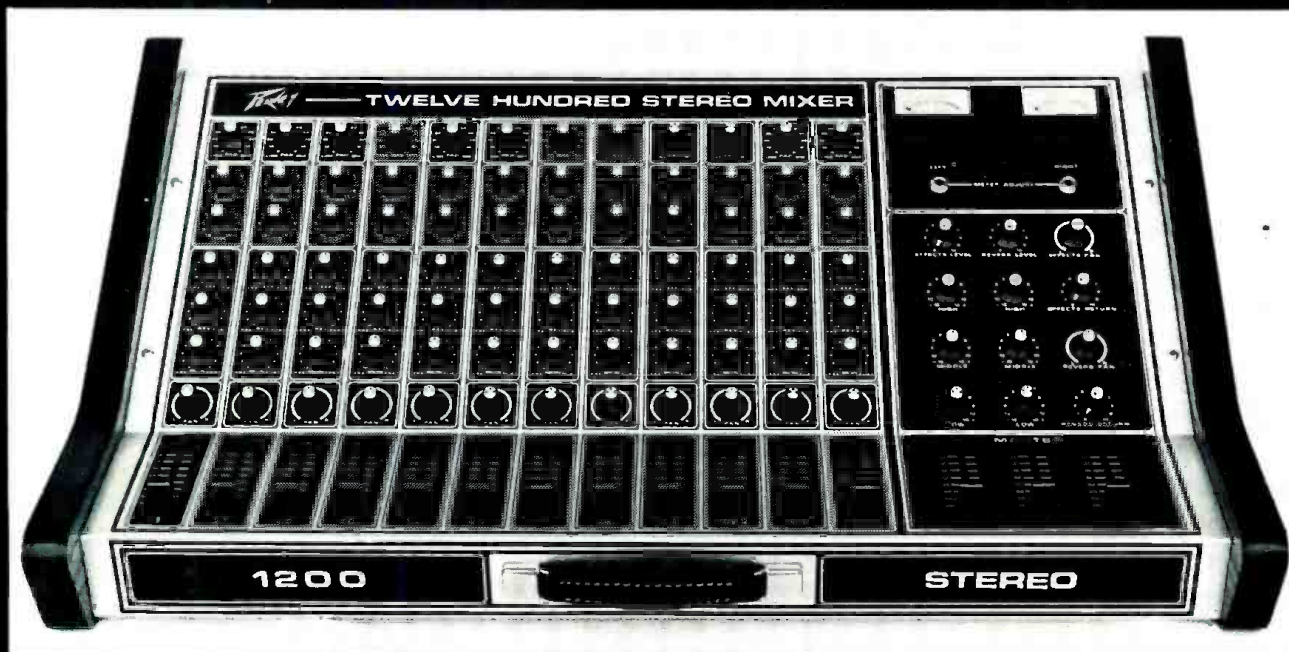
There's more. Much more. Go hear the rest.

Circle 19 on Reader Service Card

James B. Lansing Sound, Inc. • Professional Division • 3249 Casitas Avenue • Los Angeles 90039

JBL

THE PEAVEY 1200 MIXER

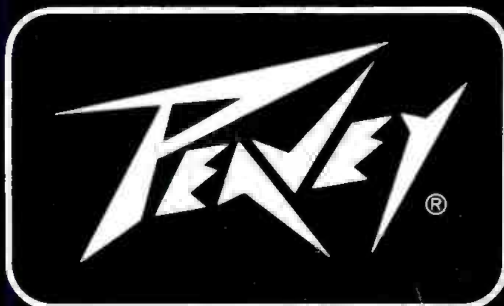


In response to the market demand, we present the 1200 Mixer, the first truly professional mixer for less than \$1,000.

- 12 transformer balanced, low impedance mike inputs
 - 12 unbalanced, high impedance line inputs
 - Input attenuation & mike/line selection
 - High and low equalization on each channel
 - Stereo pan on each channel
- Three send controls on each channel, all having pre or post capability
 - Output slide attenuators on each channel
- Master control area consisting of left & right main slide attenuators with associated low, middle & high equalization and monitor slide attenuator.
 - Effects master, return & pan controls
 - Reverb master, return, & pan controls
- 600 Ohm transformer balanced outputs on left & right main and monitor
- Lighted VU meter on left & right mains, externally adjustable.

Suggested Retail Price

\$949.50



FOR MORE ABOUT THE 1200 MIXER WRITE: PEAVEY ELECTRONICS, BOX 2898, MERIDIAN, MS . 39301

A98105KUOWA
KUOW RADIS
D S 50 UNIV OF
325 COM